

TM 10-4230-203-24P

T E C H N I C A L M A N U A L

**ORGANIZATIONAL DIRECT AND GENERAL SUPPORT MAINTENANCE
REPAIR PARTS AND SPECIAL TOOLS LIST**

**DELOUSING OUTFIT; POWER DRIVEN, GASOLINE ENGINE,
4 CYCIE, AIR COOLED, 3600 RPM 4.7 HP, 10 DUSTING GUNS
(CURTIS AUTOMOTIVE DEVICES INC MODEL (DR 70,000)FSN 4230-078-5455
(CIRTIS DYNA-PRODUCTS CORP MODEL CDR 70,000B) FSN 4230-935-9361**

This copy is a reprint which includes current
pages from Change 1.

**HEADQUARTERS, DEPARTMENT OF THE ARMY
DECEMBER 1970**

CHANGE }
No. 1 }

HEADQUARTERS
DEPARTMENT OF THE ARMY
WASHINGTON, D. C. 24 February 1972

Technical Manual
Organizational, Direct and General Support Maintenance
Repair Parts and Special Tools List

**DELOUSING OUTFIT: POWER DRIVEN, GASOLINE ENGINE,
4 CYCLE, AIR COOLED, 3600 RPM, 4.7 HP, 10 DUSTING GUNS
(CURTIS AUTOMOTIVE DEVICES, INC. MODEL CDR 70,000)
FSN 4230-078-5455 (CURTIS DYNA-PRODUCTS CORP MODEL CDR 70,000B)
FSN 4230-935-9361**

Current as of 4 February 1972

TM 10-4230-203-24P, 1 December 1970, is changed as follows:

All changes, additions or deletions of federal stock numbers or manufacturer's part numbers should be appropriately reflected in the parts listing and index of the manual.

Page	Line	Action	(1) SMR code	(2) Federal stock No.	(3) Description Reference No. & mfr. code	(4) Unit of meas	(5) Qty inc in unit	(6) 30-day DS maint allowance			(7) 30-day GS maint allowance			(8) 1-Yr alw per 100 equip contgy	(9) Illustration	
								(a) 1-20	(b) 21-50	(c) 51-100	(a) 1-20	(b) 21-50	(c) 51-100		(a) Fig No.	(b) Item No.
					SECTION V--REPAIR PARTS FOR DS, GS MAINTENANCE											
					GROUP 02--GUN ASSEMBLY, DUSTING											
15	1	Ch col 2 and 3		.3740-253-5715	GUN ASSEMBLY, DUSTING CFD 70163 (82254) A (COMPONENTS SAME AS GUN AS- SEMBLY, FSN 4230-869-7831 P/N CFD 70032 (82254), EXCEPT WHERE INDIVIDUAL COMPONENTS ARE ANNOTATED											
	2	Ch col 2 and 3		4230-869-7831	GUN ASSEMBLY, DUSTING CFD 70032 (82254) B											
16	6	Ch col 2		4940-123-2993	CONTAINER CFB 70160 (82254) B											
					GROUP 03--ENGINE ASSEMBLY											
17	1	Ch col 3		2805-123-2089	ENGINE, GASOLINE K161P28975J (34199) B											
	2	Add new line	POR	4805-908-3201	ENGINE, GASOLINE K161P28975E (34199) A	EA	1	*	*	*	*	*	*	5	4	1

By Order of the Secretary of the Army:

Official:

KENNETH G. WICKHAM,
Major General United States Army,
The Adjutant General

W. C. WESTMORELAND,
General, United States Army,
Chief of Staff

Distribution:

To be distributed in accordance with DA Form 12-25, Section I (qty rqr block no. 150) Organizational Maintenance requirements for Pest Control.

TECHNICAL MANUAL }
 No. 10-4230-203-24P }

HEADQUARTERS
 DEPARTMENT OF THE ARMY
 WASHINGTON, D. C., 1 December 1970

ORGANIZATIONAL, DIRECT AND GENERAL SUPPORT MAINTENANCE REPAIR PARTS AND
 SPECIAL TOOLS LISTS
**DELOUSING OUTFIT: POWER DRIVEN, GASOLINE ENGINE, 4 CYCLE,
 AIR COOLED, 3600 RPM, 4.7 HP, 10 DUSTING GUNS
 (CURTIS AUTOMOTIVE DEVICES, INC MODEL CDR 70,000)
 FSN 4230-078-5455
 (CURTIS DYNA-PRODUCTS CORP MODEL CDR 70,000B)
 FSN 4230-935-9361**
 Current as of 29 October 1970

	Paragraph	Page
SECTION I. INTRODUCTION		iii
scope	1	iii
General	2	iii
Explanation of columns	3	iii
Special information	4	v
How to locate repair parts	5	v
Abbreviations	6	v
Federal supply codes for manufacturers.	7	v
Recommendations for maintenance publication improvements	8	vi
SECTION II. PRESCRIBED LOAD ALLOWANCE.		1
	Listing Page	Illus. Figure
SECTION III. REPAIR PARTS FOR ORGANIZATIONAL MAINTENANCE	3	1, 2
Group 01. Box and Frame Assembly	3	3
02. Gun Assembly, Dusting	3	4
03. Engine, Gasoline	5	5
04. Fuel Tank and Bracket	5	6
05. Fuel Filter	6	7
06. Air Cleaner.	6	8
07. Carburetor	7	9
08. Flywheel, Blower Housing and Baffles	7	10
09. Ignition Components	8	11
10. Engine Block, Cylinder Head, Crankshaft, Oil can	9	14
13. Governor and Controls	10	16
15. Compressor and Drive Coupling.	11	17
16. Air Discharge System	11	18
17. Compressor Cooling	12	19
18. Compressor Cylinder Head	13	20
19. Compressor Housing, Piston and Shaft	14	
SECTION IV. SPECIAL TOOLS, TEST AND SUPPORT EQUIPMENT FOR ORGANIZATIONAL MAINTENANCE (NOT APPLICABLE)		
SECTION V. REPAIR PARTS FOR DS AND GS MAINTENANCE		
Group 01. Box and Frame Assembly	15	1, 2
02. Gurs Assembly, Dusting	15	3
03. Engine, Gasoline	17	4
04. Fuel Tank and Bracket	17	5
05. Fuel Filter	18	6
06. Air cleaner	18	7
07. carburetor	19	8
08. Flywheel, Blower Housing and Baffles	19	9
09. Ignition Components	20	10
10. Engine Block, Cylinder Head, Crankshaft, Oil can	21	11

*This manual together with TM 10-4230-203-14, supersedes TM 10-4230-203-15, 14 January 1966 including all changes.

	Listing Page	Illus. Figure
11. Piston and Connecting Rod	23	12
12. Valves 1.....	23	13
13. Governor and Controls	23	14
14. Camshaft	24	15
15. Compressor and Drive Coupling	24	16
16. Air Discharge System	25	17
17. Compressor Cooling	26	18
18. Compressor Cylinder Head.....	27	19
19. Compressor Housing, Piston and Shaft	27	20
SECTION VI. SPECIAL TOOLS, TEST AND SUPPORT EQUIPMENT FOR DS AND GS MAINTENANCE (NOT APPLICABLE)		
SECTION VII FEDERAL STOCK NUMBER AND REFERENCE NUMBER INDEX	49	

Section I. INTRODUCTION

1. Scope

This manual lists repair parts, special tools, test and support equipment required for the performance of organizational, direct support, general support maintenance of the delousing outfit.

2. General

This Repair Parts and Special Tools List is divided into the following sections:

a. Prescribed Load Allowance (PLA)-Section II. A composite listing of repair parts, special tools, test and support equipment having quantitative allowances for initial stockage at the organizational level.

b. Repair Parts-Section III. A list of repair parts authorized for the performance of maintenance at the organizational level in figure and item number sequence.

c. Special Tools, Test and Support Equipment -Section IV. A list of special tools, test and support equipment authorized for the performance of maintenance at the organizational level. (When no special tools, test and support equipment is included, mark "Not Applicable.")

d. Repair Parts-Section V. A list of repair parts authorized for the performance of maintenance at the direct support and general support level in figure and item number sequence.

e. Special Tools, Test and Support Equipment -Section VI. A list of special tools, test and support equipment authorized for the performance of maintenance at the direct support and general support level. (When no special tools, test and support equipment is included, mark, "Not Applicable.")

f. Federal Stock Number and Reference Number Index-Section VII. A list of Federal stock numbers in ascending numerical sequence, followed by a list of reference numbers appearing in all of the listings, in alphanumeric sequence, cross-referenced to the illustration figure number and item number.

Note. Items not illustrated are cross-referenced to assembly group number.

3. Explanation of Columns

The following provides an explanation of columns in the tabular lists in sections II through IV.

a. Source, Maintenance, and Recoverability Codes (SMR).

Note. Common hardware items known to be readily available in Army supply channels are assigned Maintenance codes only. Source codes, Recoverability codes, and Maintenance Allowances are not assigned this category.

(1) Source code Indicates the selection

status and source for the listed item. Source codes used are:

<i>Code</i>	<i>Explanation</i>
P	Repair Parts, Special Tools and Test Equipment supplied from the GSA/DSA, or Army supply system, and authorized for use at indicated maintenance categories.
P2	Repair Parts, Special Tools and Test Equipment which are procured and stocked for insurance purposes because the combat or military essentiality of the end item dictated that a minimum quantity be available in the supply system.
M	Repair Parts, Special Tools and Test Equipment which are not procured or stocked, as such, in the supply system but are to be manufactured at indicated maintenance levels.
A	Assemblies which are not procured or stocked as such, but are made up of two or more units. Such component units carry individual stock numbers and descriptions, are procured and stocked separately and can be assembled to form the required assembly at indicated maintenance categories.
X	Parts and assemblies that are not procured or stocked because the failure rate is normally below that of the applicable end item or component. The failure of such part or assembly should result in retirement of the end item from the supply system.
X1	Repair parts which are not procured or stocked. The requirement for such items will be filled by the next higher assembly or component.
X2	Repair Parts, Special Tools and Test Equipment which are not stocked and have no foreseen mortality. The indicated maintenance category requiring such repair parts will attempt to obtain the parts through cannibalization or salvage, the item may be requisitioned with exception data, from the end item manager, for immediate use.
G	Major assemblies that are procured with PEMA funds for initial issue only as exchange assemblies at DSU and GSU level. These assemblies will not be stocked above the DS and GS level or returned to depot supply level.

(2) Maintenance code indicates the lowest category of maintenance authorized to install the listed item. The maintenance codes are:

<i>Code</i>	<i>Explanation</i>
C	Crew or operator maintenance
O	Organizational maintenance
F	Direct support maintenance
H	General support maintenance

(3) Recoverability code indicates whether unserviceable items should be returned for recovery or salvage. Items not coded are expendable. Recoverability codes are:

<i>Code</i>	<i>Explanation</i>
R	Applied to repair parts, (assemblies and components) special tools and test equipment which are considered economically repairable at direct and general support maintenance levels. When the item is no longer economically repairable, it is normally disposed at the GS level. When supply considerations permit, some of these repair parts may be listed for automatic return to supply for depot

	level repair as set forth in AH 710-50. When so listed, they will be replaced by supply on an exchange basis.
S	Repair Parts, Special Tools, Test Equipment and assemblies which are economically repairable at DSU and GSU activities and which normally are furnished by supply on an exchange basis. When items are determined by a GSU to be uneconomically repairable, they will be evacuated to a depot for evaluation and analysis before final disposition.
T	Higher dollar value recoverable repair parts, special tools and test equipment which are subject to special handling and are issued on an exchange basis. Such items will be repaired or overhauled at depot maintenance activities only. No repair may be accomplished at lower levels.
U	Repair Parts, Special Tools and Test Equipment specifically selected for salvage by reclamation units because of precious metal content, critical materials, high dollar value or reusable casings or castings.

b. Federal Stock Number. Indicates the Federal stock number assigned to the item and will be used for requisitioning purposes.

c. Description. Indicates the Federal item name and any additional description of the item required. Assembly components and subassemblies are indented under major assemblies. The abbreviation "w/e" when used as a part of the nomenclature, indicates the Federal stock, number includes all armament, equipment, accessories, and repair parts issued with the item. A part number or other reference number is followed by the applicable 5-digit Federal supply code for manufacturers in parenthesis. Repair parts quantities included in kits and sets are shown in front of the repair part name. Material required for manufacture or fabrication is identified.

d. Unit of Measure (U/M). A two-character alphabetic abbreviation indicating the amount or quantity of the item upon which the allowances are based, e.g., ft, ea, pr, etc.

e. Quantity Incorporated in Unit. Indicates the quantity of the item used in the assembly group. A "V" appearing in this column in lieu of a quantity indicates that a definite quantity cannot be indicated (e.g., shims, spacers, etc.).

f. Fifteen-Day Organizational Maintenance Allowance.

(1) The allowance columns are divided into four subcolumns. Indicated in each subcolumn opposite the first appearance of each item is the total quantity of the items authorized for the number of equipments supported. Subsequent appearances of the same item will have the letters "REF" in the allowance column. To locate the referenced item, locate the FSN or reference number in the index. The earliest figure and item

number is the referenced item. Items authorized for use as required but not for initial stockage are identified with an asterisk in the allowance column.

(2) The quantitative allowance for organizational level of maintenance represents one initial prescribed load for a 15-day period for the number of equipments supported. Units authorized additional prescribed loads, multiply the number of prescribed loads by the quantity in the appropriate density column to determine the number of repair parts authorized.

(3) To determine allowances when supporting more than 100 of these equipments: First, divide the number of equipments supported by 100 by moving the decimal two spaces left; second, multiply the result by the quantity in the 51-100 density column. Example, authorized allowance for 51-100 equipments is 12; for 140 equipments, multiply 12 by 1.40 or 16.80 rounded off to 17 parts required.

(4) Subsequent changes to allowances will be limited as follows: No change in the range of items is authorized. If additional items are considered necessary, recommendation should be forwarded to the U. S. Army Mobility Equipment Command for exception or revision to the allowance list. Revisions to the range of items authorized will be made by the U. S. Army Mobility Equipment Command based upon engineering experience, demand data, or TAERS information.

g. Thirty-Day DS/GS Maintenance Allowances.

Note. Allowances in GS Column are for GS maintenance only.

(1) The allowance columns are divided into three subcolumns. Indicated in each subcolumn, opposite the first appearance of each item, is the total quantity of items authorized for the number of equipments supported. Subsequent appearances of the same item will have the letters "REF" in the applicable allowance column. To locate the referenced item locate the FSN or reference number in the index. The earliest figure and item number is the referenced item. Items authorized for use as required but not for initial stockage are identified with an asterisk in the allowance column.

(2) The quantitative allowances for DS/GS levels of maintenance will represent initial stockage for a 30-day period for the number of equipments supported.

(3) To determine allowances when supporting more than 100 of these equipments: First, divide "the number of equipments supported by 100 by moving the decimal two places left; second, multiply the result by the quantity in the 51-100 density column. Example, authorized allowance

for 51-100 equipments is 40; for 150 equipments multiply 40 by 1.50 or 60 parts required.

h. One-Year Allowance Per 100 Equipments/Contingency Planning Purposes. Indicates opposite the first appearance of each item the total quantity required for distribution and contingency planning purposes. The range of items indicates total quantities of all authorized items required to provide for adequate support of 100 equipments for one year. Subsequent appearances of the same item will have the letters "REF" in the allowance column.

i. Illustration. This column is divided as follows:

(1) Figure number. Indicates the figure number of the illustration in which the item is shown.

(2) Item number. Indicates the callout number used to reference the item in the illustration.

4. Special Information

a. Identification of the usable on codes included in the description column of this publication are: (Applicable only when identifying parts to particular serial number range or model).

<i>Code</i>	<i>Used on</i>
A	Model CDR 70,000
B	Model CDR 70,000B

b. Repair parts mortality has been based on 600 hours operation per year.

c. Parts which require manufacture or assembly at a category higher than that authorized for installation will indicate in the source column the higher category.

d. The following publications pertain to the delousing outfit and its component.

TM 10-4230-203-14 Operator, Organizational
Direct and General
Support Maintenance
Manual

LO 10-4230-203-15 Lubrication Order

e. The same illustrations are used to illustrate the repair parts and special tools listed in both organizational maintenance section and direct and general support and depot maintenance section.

5. How to Locate Repair Parts

a. When Federal stock number or reference number is unknown:

(1) *First.* Using the table of contents determine the assembly group within which the repair part belongs. This is necessary since illustrations are prepared for assembly groups, and listings are divided into the same groups.

(2) *Second.* Find the illustration covering the assembly group to which the repair part belongs.

(3) *Third.* Identify the repair part on the illustration and note the illustration figure and

item number of the repair part.

(4) Using the Repair Parts Listings, find the assembly group to which the repair part belongs and locate the illustration figure and item number noted on the illustration.

b. When Federal stock number or reference is known.

(1) *First.* Using the Index of Federal Stock Numbers and Reference Numbers find the pertinent Federal stock number or reference number. This index is in ascending FSN sequence followed by a list of reference numbers in alpha-numeric sequence, cross-referenced to the illustration figure number and item number.

(2) *Second.* Using the Repair Parts Listing, find the assembly group of the repair part and the illustration figure number and item number referenced in the Index of Federal Stock Numbers and Reference Numbers.

c. When the Federal stock number or reference number is known and the repair part is not illustrated :

(1) *First.* Using the Index of Federal Stock Numbers and Reference Numbers find the pertinent Federal stock number or reference number in the section titled "Items Not Illustrated" and note the group number. This section is in ascending FSN sequence followed by a list of reference numbers in alpha-numeric sequence, cross-referenced to assembly group number.

(2) *Second.* Using the Table of Contents, locate the assembly group number and page number.

(3) *Third.* Using the applicable group number and page number, locate the pertinent stock number or reference number in the Repair Parts Listing. Items which are not illustrated are listed at the end of the assembly group to which they belong.

6. Abbreviations

ea	each
hd	head
hex	hexagon
.	inch (es)
lg	long (length)
mug	mounting (s)
thd	thread (s)
thk	thick (ness)

7. Federal Supply Codes for Manufacturers

<i>Code</i>	<i>Manufacturer</i>
00736	AirAir-Maze Division of North American Rockwell Corp, Air-Maze Plant
14127	Foster Mfg Co.
24617	General Motors Corp.
30399	Independent Lock Co.
34199	Kohler Co.
34494	Kunkle Valve Co.
39428	McMaster Carr Supply Co.

<i>Code</i>	<i>Manufacturer</i>
43334	New Departure-Hyatt Bearings Division, General Motors Corp.
76005	Lord Mfg Co. Division of Lord Corp.
77060	Packard Electric Division of General Motors Corp.
78553	Tinnerman Products Inc.
79136	Waldes Kohinoor Inc.
82254	Curtis Dyna-Products Corp.
95933	Revcor Inc.
96906	Military Standards Promulgated by Standardization Div., Directorate of Logistic Services DSA.

8. Recommendations for Maintenance Publication Improvements

Report of errors, omissions, and recommendations for improving this publication by the user is encouraged. Reports should be submitted on DA Form 2028 (Recommended Changes to Publications) and forwarded direct to Commanding General, U. S. Army Mobility Equipment Command, ATTN: AMSME-MPP, 4300 Goodfellow Boulevard, St. Louis, Mo. 63120.

(1) FEDERAL STOCK NUMBER	(2) DESCRIPTION	USABLE ON CODE	(3) 15-DAY ORGANIZATIONAL MAINTENANCE ALLOWANCE			
			(a) 1-5	(b) 6-21	(c) 21-54	(d) 1-10
	SECTION II - PRESCRIBED LOAD ALLOWANCE					
	GROUP 01 - BOX AND FRAME ASSEMBLY					
5340-020-8588	SHOCK MOUNT			1	1	2
	GROUP 02 - GUN ASSEMBLY, DUSTING					
3740-253-5715	GUN ASSEMBLY, DUSTING	B		1	3	5
3740-437-7142	NOZZLE: GUN			1	1	2
4230-087-7771	CANISTER, GUN	A		1	1	3
4230-087-7780	HOSE ASSEMBLY: DUSTING GUN	B		1	1	2
4230-123-2993	CONTAINER	B		1	1	3
4230-869-7831	GUN ASSEMBLY, DUSTING	A		1	3	7
4730-103-5390	NIPPLE: GUN TO HOSE			1	1	2
4730-457-6391	NOSE: GUN NOZZLE			1	1	2
5330-248-3831	O RING: VALVE BODY			1	1	3
5330-248-3837	O RING: VALVE BODY			1	1	3
5330-248-3838	O RING: HANDLE TO COVER			1	1	3
5330-252-6048	O RING: VALVE CAP			1	1	3
5330-436-7190	GASKET: COVER	B		1	1	3
5330-641-4354	O RING: VALVE STEM			1	1	3
5330-908-0443	GASKET: CANISTER COVER	A		1	1	3
	SPRING, VALVE FCA70038 (82254)			1	1	2
	NUT, KNURLED: COVER MTG CFA70165 (82254)	B		1	3	5
	STEM, VALVE CFB70039 (82254)			2	2	2
	CAP, VALVE CFB70042 (82254)			1	1	2
	STRAP: CONTAINER MTG CFB70172 (82254)	B		1	1	3
	BODY, VALVE CFC70132 (82254)			1	1	2
	CLAMP, HOSE C3122101 (78553)			1	1	2
	NIPPLE 163 (14127)			1	1	2
	COUPLER, QUICK DISCONNECT 3603 (14127)			1	1	2
	GROUP 9 - IGNITION COMPONENTS					
2805-888-9239	COIL MAGNETO					1
2920-023-5167	COIL ASSEMBLY	B				1
2920-288-3126	SPARK PLUG			1	2	3
2920-564-2508	BREAKER ASSEMBLY			1	2	3
2920-848-3232	ROTOR	B			1	1

(1) FEDERAL STOCK NUMBER	(2) DESCRIPTION	USABLE ON CODE	(3) 15-DAY ORGANIZATIONAL MAINTENANCE ALLOWANCE			
			(a) 1-5	(b) 6-20	(c) 21-90	(d) 51-10
5910-509-9603	CONDENSER	A		1	2	3
5910-780-8781	CONDENSER ASSEMBLY	B		1	2	3
5930-013-0401	SWITCH, ELECTRICAL, STOP					1
5935-919-5930	CABLE, SPARK PLUG				1	1
	GROUP 10 - ENGINE BLOCK, CYLINDER HEAD, CRANKSHAFT, OIL PAN					
4330-907-9650	FILTER			1	1	1
5330-582-2655	SEAL, BREATHER			1	1	2
	GROUP 13 - GOVERNOR AND CONTROLS					
5340-012-0525	SPRING, GOVERNOR				1	1
	GROUP 16 - AIR DISCHARGE SYSTEM					
4730-489-8252	COUPLER, QUICK DISCONNECT				1	1
4820-125-6329	VALVE, RELIEF				1	1
	GROUP 18 - COMPRESSOR CYLINDER HEAD					
4310-906-7916	INTAKE VALVE			1	1	3
	GROUP 19 - COMPRESSOR HOUSING, PISTON AND SHAFT					
4310-906-7915	DIAPHRAGM			1	1	3
	GROUP 20 - REPAIR KITS					
2910-075-0397	KIT, REPAIR: CARBURETOR					1

(1) SMR CODE	(2) FEDERAL STOCK NUMBER	(3) DESCRIPTION REF NUMBER & MFR CODE	(4) USABLE ON CODE	(5) QTY INC IN UNIT	(6) 15-DAY ORGANIZATIONAL MAINTENANCE ALLOW				(7) ILLUS- TRATION		
					(a)	(b)	(c)	(d)	(a)	(b)	
					1-5	6-20	21-50	51-100	FIG. NO.	ITEM NO.	
		SECTION III - REPAIR PARTS FOR ORGANIZATIONAL MAINTENANCE									
		GROUP 01 - BOX AND FRAME ASSEMBLY									
20		BOX, PARTS CFR70016 (82254)	A	EA	1				1	1	
20		FRAME ASSEMBLY CFD70000 (82254)	A	EA	1				1	2	
0	5310-655-6457	NUT, PLAIN, HEXAGON: GROUND STRAP G120377 (24617)		EA	1	*	*	*	*	1	3
0	5310-616-7998	WASHER, LOCK: GROUND STRAP G138542 (24617)		EA	1	*	*	*	*	1	4
0	5340-020-8588	SHOCK MOUNT J7153-1 (76005)		EA	6	*	1	1	2	1	5
0	6150-268-3659	STRAP, GROUND: ENGINE TO FRAME EG8 (77060)		EA	1	*	*	*	*	1	6
0	5305-012-0233	BOLT, MACHINE: GROUND STRAP G120233 (24617)		EA	1	*	*	*	*	1	7
20		BOX, PARTS CFR70144 (82254)	B	EA	1					2	1
0	5320-050-1207	RIVET: HASP MTG G104149 (24617)		B	EA	3	*	*	*	2	2
20		HASP: PADLOCK CFA70030 (82554)		B	EA	1				2	3
0		PADLOCK 382 (30399)		EA	1	*	*	*	*	2	4
0		RIVET: BRACKET MTG MS16535-156 (96906)		B	EA	10	*	*	*	2	5
20		BRACKET: LOCK CFB70138 (82254)		B	EA	2				2	6
0	5320-050-1206	RIVET: HANDLE MTG G9402099 (24617)		B	EA	10	*	*	*	2	7
20		HANDLE, BOX MS35791-2 (96906)		B	EA	2				2	8
20		FRAME ASSEMBLY CFD70150 (82254)		B	EA	1				2	9
0	5320-042-5284	RIVET: SPRING BOLT G104150 (24617)		B	EA	12	*	*	*	2	10
20		SPRING BOLT: BOX TO FRAME MOMB1244 (39428)		B	EA	2				2	11
		GROUP 02 - GUN ASSEMBLY, DUST ING									
P O R	4230-869-7831	GUN ASSEMBLY, DUST ING CFD70163 (82254) (COMPONENTS SAME AS GUN ASSEMBLY, FSN 3740-253-5715, P/N CFD70033 (82254), EXCEPT WHERE INDIVIDUAL COMPONENTS ARE ANNOTATED)	A	EA	12	*	1	3	5	3	
P O R	3740-253-5715	GUN ASSEMBLY, DUST ING CFD70033 (82254)	B	EA	10	*	1	3	5	3	
P O	3740-437-7142	NOZZLE: GUN CFA70064 (82254)		EA	1	*	1	1	2	3	1
P O	4730-457-6391	NOSE: GUN NOZZLE CFA70034 (82254)		EA	1	*	1	1	2	3	2

(1) SMR CODE	(2) FEDERAL STOCK NUMBER	(3) DESCRIPTION EF NUMBER & MFR CODE	USABLE ON CODE	1) IT IF AS	3) TY IC 4 4IT	(6) 15-DAY ORGANIZATIONAL MAINTENANCE ALLOW				(7) ILLUS- TRATION	
						a)	(b)	(c)	(d)	a)	(b)
						-5	-20	1-50	1-100	IG. 10.	TEM NO.
' 0	1305-724-5839	SETS CREW: DRI LL PASSAGE PLUG, HEXAGON SOCKET HEAD, CUP POINT, STEEL, 3/8-16 THD SIZE, 1/4 IN. LG MS51963-99 (96906)	A	EA	1	*	*	*	*	3	3
20		HANDLE, DUSTING GUN CFD70033 (82254)		EA	1					3	4
' 0	1315-582-2466	PIN, SPRING: TRIGGER G9415236 (24617)		EA	2	*	*	*	*	3	5
' 0	1730-103-5390	NIPPLE: GUN TO HOSE 103 (14127)		EA	1	*	1	1	2	3	6
' 0	1305-723-9387	SETScrew: VALVE RETAINING G127782 (24617)		EA	1	*	*	*	*	3	7
20		TRIGGER CFB70037 (82254)		EA	1					3	8
' 0	1230-123-2993	CONTAINER CFB70160 (82254)	B	EA	1	*	1	1	3	3	9
' 0		STRAP: CONTAINER MTG CFB70172 (82254)	B	EA	1	*	1	1	3	3	10
' 0	1330-436-7190	GASKET: COVER CFA70158 (82254)	B	EA	1	*	1	1	3	3	11
20		COVER, CONTAINER CFB70168 (82254)	B	EA	1					3	12
' 0		NUT, KNURLED: COVER MTG CFA70165 (82254)	B	EA	2	*	1	1	5	3	13
' 0	1230-087-7771	CANISTER, GUN CFC70046 (82254)	A	EA	1	*	1	1	3	3	14
' 0	5330-908-044:	GASKET: CANISTER COVER CFA70057 (82254)	A	EA	1	*	1	1	3	3	15
' 0		TUBE, INLET CFA70058 (82254) MANUFACTURE FROM:		EA	1					3	16
P 0	4730-585-735:	NUT: 1 REQUIRED FOR EA TUBE G120487 (24617)									
P 0	4730-289-861:	SLEEVE: 1 REQUIRED FOR EA TUBE G120488 (24617)									
P 0	4710-277-552:	TUBE: 1 1/2 IN. REQUIRED FOR EA TUBE									
4 0		TUBE, OUTLET CFA70059 (82254) MANUFACTURE FROM:		EA	1					3	17
P 0	4730-585-735:	NUT: 1 REQUIRED FOR EA TUBE G120487 (24617)									
P 0	4730-289-861:	SLEEVE: 1 REQUIRED FOR EA TUBE G120488 (24617)									
P 0	4710-277-552:	TUBE: 1 1/4 IN. REQUIRED FOR EA TUBE									
P 0	4730-266-053	CONNECTOR: CANISTER TO GUN G121711 (24617)		EA	4					3	18
K20		COVER, CANISTER CFC70052 (82254)	A	EA	1					3	19
P 0		CAP, VALVE CFB70042 (82254)		EA	1	*	1	1	2	3	20
P 0	5330-248-383	O RING: HANDLE TO COVER MS29513-13 (96906)		EA	4	*	1	1	3	3	21
P 0	5330-641-435	O RING: VALVE STEM MS29513-4 (96906)		EA	1	*	1	1	3	3	22

(1) SMR CODE	(2) FEDERAL STOCK NUMBER	(3) DESCRIPTION REF NUMBER & MFR CODE	(4) USABLE OH CODE	(5) UNIT OF MEAS QTY INC IN UNIT	(6) 15-DAY ORGANIZATIONAL MAINTENANCE ALW				(7) ILLUS- TRATION	
					(a)	(b)	(c)	(d)	(a)	(b)
					1-5	6-20	21-50	51-100	FIG. NO.	ITEM NO.
P O		SPRING, VALVE CFA70038 (82254)		EA 1	*	1	1	2	3	23
P O		STEM, VALVE CFB70039 (82254)		EA 1	*	2	2	2	3	24
P O	5330-248-3837	O RING: VALVE BODY MS29513-110 (96906)		EA 1	*	1	1	3	3	25
P O	5330-248-3831	O RING: VALVE BODY MS29513-11 (96906)		EA 1	*	1	1	3	3	26
P O		BODY, VALVE CFC70132 (82254)		EA 1	*	1	1	2	3	27
P O	5330-252-6048	O RING: VALVE CAP MS29513-6 (96906)		EA 1	*	1	1	3	3	28
P O	4230-087-7780	HOSE ASSEMBLY: DUST BING GUN CFB70097 (82254)		EA 10	*	1	1	2	3	29
P O		COUPLER, FLU. CK DISCONNECT 3603 (14127)		EA 1	*	1	1	2	3	30
P O		CLAMP, HOSE C3122-101 (78553)		EA 2	*	1	1	2	3	31
X1		HOSE CFA70098 (82254)		EA 1					3	32
P O		NIPPLE 163 (14127)		EA 1	*	1	1	2	3	33
GROUP 03 - ENGINE ASSEMBLY										
P O R	2805-123-2089	ENGINE, GASOLINE K161P28975J (34199)		EA 1	*	*	*	*	4	1
P O	4730-511-1677	COUPLING G444098 (24617)		EA 1	*	*	*	*	4	2
P O	4730-881-3929	NIPPLE, PIPE G120146 (24617)		EA 1	*	*	*	*	4	3
P O	5305-638-9437	BOLT, MACHINE: ENGINE MTG G122181 (24617)		EA 4	*	*	*	*	4	4
P O	5310-508-2673	WASHER, FLAT: ENGINE MTG G120388 (24617)		EA 4	*	*	*	*	4	5
P O	5310-655-6457	NUT, PLAIN, HEXAGON: ENGINE MTG G120377 (24617)		EA 4	*	*	*	*	4	6
P O	5310-616-7998	WASHER, LOCK: ENGINE MTG, INTERNAL TEETH, 3/8 IN. SCREW SIZE		EA 4	*	*	*	*	4	7
P O	4730-724-6067	PLUG, PIPE: OIL DRAIN X305-4 (34199)		EA 1	*	*	*	*	4	8
GROUP 04 - FUEL TANK AND BRACKET										
P O	5305-270-7526	SCREW, CAP, HEXAGON HEAD: FUEL TANK BRACKET MTG, 1/4-20 THD SIZE, 3/4 IN. LG X132-2 (34199)		EA 2	*	*	*	*	5	1
P O	5310-582-5965	WASHER, LOCK: FUEL TANK BRACKET MTG, 1/4 IN. SCREW SIZE		EA 2	*	*	*	*	5	2
X20		BRACKET: FUEL TANK MTG A230752 (34199)		EA 1					5	3
P O	5305-550-2618	SCREW, CAP, HEXAGON HEAD: STRAP X5-4 (34199)		EA 2	*	*	*	*	5	4
P O	5310-044-3533	NUT, PLAIN, HEXAGON: STRAP SCREW X101-8 (34199)		EA 2	*	*	*	*	5	5

(1) SMI COD	(2) FEDERAL STOCK NUMBER	DESCRIPTION	USAB ON COD I	(4) INIT OF IEAS	(5) Q' IN IN UN	(6)				(7)		
						15	ORGANIZ		MAN	1	US-	
						(a)	(b)	(c)	(d)			(a)
3-1	6-21	7-	51-10	11	ITEI							
		REF NUMBER & MFR CODE										
		STRAP: FUEL TANK 230160 (34199)		EA								6
X20		TANK, FUEL 230164 (34199)		EA								7
X20		WEBBING: BRACKET X295-2 (34199)		EA								8
P O	2910-132-46	CAP: FUEL TANK 236655 (34199)		EA								9
		GROUP 05 - FUEL FILTER										
P O	2910-544-05	FILTER, FUEL 210101A (34199) (COMPONENTS SAME AS FILTER, FSN 2910-905-9792)	A	EA								1
P O	2910-905-975	FILTER, FUEL MS51086-1 (96906)	B	EA								1
P O		BOWL, SEDIMENT, FUE L 220879 (34199)		EA								2
11		GASKET: BOWL 220881 (34199) (PART OF SET, FSN 2805-507-1 466)		EA								3
P O	4730-203-536	NIPPLE, FILTER X217-6 (34199)		EA								4
P O	4730-277-826	ELBOW, PIPE TO TUBE: LINE TO FILTER AND CARBURETOR X447-10 (34199)		EA								5
P O	2910-023-518	LINE, FUEL: FILTER TO CARBURETOR A231420 (34199)		EA								6
		GROUP 06 - AIR CLEANER										
P O	3305-012-058	SCREW, CAP, HEXAGON HEAD: BRACE TO ELBOW X5-1 (34199)		EA								1
O	3310-543-270	WASHER, LOCK: BRACE TO ELBOW X20-1 (34199)		EA								2
O	3305-151-157	SCREW, CAP, HEXAGON HEAD: ELBOW MTG X51-41 (34199)		EA								3
O	3310-010-649	WASHER, LOCK: ELBOW MTG X18-2 (34199)		EA								4
20		ELBOW: AIR CLEANER TO CARBURETOR 230553 (34199)		EA	1							7 5
1		GASKET: ELBOW MTG 220537 (34199) (PART OF SET, FSN 2805-507-1 466)		EA	1							7 6
O	305-274-112	SCREW, CAP, HEXAGON HEAD: BRACE MTG X134-1 (34199)		EA	1							7 7
O	310-012-038	WASHER, FLAT: BRACE MTG X25-63 (34199)		EA	1							7 8
10		BRACE: AIR CLEANER 230539 (34199)		EA	1							7 9
O	305-015-497	SCREW, SELF-TAPPING: AIR CLEANER TO ELBOW X67-27 (34199)		EA	3							7 10
O	940-404-729	AIR CLEANER A230538 (34199)		EA	1							7 11

(1) SMR CODE	(2) FEDERAL STOCK NUMBER	(3) DESCRIPTION REF NUMBER & MFR CODE	(4) USABLE ON CODE	(5) UNIT OF MEAS QTY INC IN UNIT	(6) 15-DAY ORGANIZATIONAL MAINTENANCE ALLOW				(7) ILLUS- TRATION	
					(a)	(b)	(c)	(d)	(a)	(b)
					1-5	6-20	21-50	51-100	FIG. NO.	ITEM NO.
		GROUP 07 - CARBURETOR								
P O	5305-680-9197	SCREW, CAP, HEXAGON HEAD: CARBURETOR MOUNTING X140-1 (34199)		EA 2	*	*	*	*	8	1
P O	2910-912-8309	CARBURETOR ASSEMBLY F230500 (34199)		E 1	*	*	*	*	8	
P O	5305-042-0685	SCREW: BOWL 200420 (34199)		EA 1	*	*	*	*	8	2
K1		GASKET: BOWL SCREW 200372 (34199) (PART OF KIT, FSN 2910-075-0397)		EA 1					8	3
K1		BOWL, FUEL 200418 (34199)		EA 1					8	4
K1		GASKET: BOWL BAFFLE 200439 (34199) (PART OF KIT, FSN 2910-075-0397)		EA 1					8	5
K1		GASKET: BOWL RING 200375 (34199) (PART OF KIT, FSN 2910-075-0397)		EA 1					8	6
K1		PIN, FLOAT 200376 (34199) (PART OF KIT, FSN 2910-075-0397)		EA 1					8	7
K1		FLOAT 200408 (34199)		EA 1					8	8
K1		NEEDLE 234413 (34199) (PART OF KIT, FSN 2910-075-0397)		EA 1					8	9
K1		SEAT: NEEDLE 234437 (34199) (PART OF KIT, FSN 2910-075-0397)		EA 1					8	10
K1		GASKET: SEAT 277180 (34199) (PART OF KIT, FSN 2910-075-0397)		EA 1					8	11
K1		GASKET: CARBURETOR MTG 210223 (34199) (PART OF SET, 20-507-1 466)		EA 1					8	12
		GROUP 08 - FLYWHEEL, BLOWER HOUSING AND BAFFLES								
P O	2805-123-2990	FLYWHEEL 231638 (34199)	B	EA 1	*	*	*	*	9	1
P O	2815-927-4027	FLYWHEEL 230713 (34199)	A	EA 1	*	*	*	*	9	1
P O	2290-972-7922	PULLEY 230150 (34199)		EA 1	*	*	*	*	9	2
X20		BAFFLE, HEAD 230049 (34199)		EA 1					9	3
X20		BAFFLE, CYLINDER 230054 (34199)		EA 1					9	4
P O	5310-582-5965	WASHER, LOCK: BAFFLE MTG, 1/4 IN. SCREW SIZE		EA 2	*	*	*	*	9	5
P O	5305-274-1128	SCREW, CAP, HEXAGON HEAD: BAFFLE MTG X134-1 (34199)		EA 2	*	*	*	*	9	6
P O	5305-266-6263	SCREW, CAP, HEXAGON HEAD: BLOWER HOUSING X132-1M (34199)		EA 2	*	*	*	*	9	7

(1) SMR CODE	(2) FEDERAL STOCK NUMBER	DESCRIPTION REF NUMBER & MFR CODE	(4) USABLE ON CODE	(5) NIT DF EAS QTY INC IN JNIT	(6) 15-DAY ORGANIZATIONAL MAINTENANCE ALW				(7) ILLUS- TRATION	
					(a)	(b)	(c)	(d)	(a)	(b)
					1-5	6-20	21-50	1-100	IG. NO.	ITEM NO.
(20)		SCREEN, PULLEY 230098 (34199)		EA 1					9	8
(20)		RETAINER, SCREEN 230363 (34199)		EA 1					9	9
(20)		HOUS.ING. BLOWER 232654 (34199)		EA 1					9	10
P O	5310-027-3969	NUT, FLA 1/4 HEXAGON: PULLEY X85-1 (34199)		EA 1	*	*	*	*	9	11
P O	5310-655-5789	WASHER, LOCK: PULLEY X24-2 (34199)		EA 1	*	*	*	*	9	12
		GROUP 9- IGNITION COMPONENTS								
P O	5305-052-9051	SCREW, MACHINE: SWITCH AND CONDENSER MOUNTING X67-39 (34199)		EA 3	*	*	*	*	10	1
P O	5310-543-5933	WASHER, LOCK: SWITCH AND CONDENSER MOUNTING X22-9 (34199)		EA 3	*	*	*	*	10	2
(20)		LEAD, BREAKER A231982 (34199)	B	EA 1					10	3
(20)		LEAD, BREAKER A231942 (34199)	A	EA 1					10	3
(20)		LEAD, MAGNETO GROUND A231945 (34199)		EA 1					10	4
P O	5310-812-3373	WASHER, LOCK: CORE GROUP MTG X22-11 (34199)		EA 2	*	*	*	*	10	5
P O	5305-527-5726	SCREW, CAP, HEXAGON HEAD: CORE GROUP MTG X132-4 (34199)		EA 2	*	*	*	*	10	6
P O	2920-562-1224	MAGNETO ASSEMBLY C230437 (34199)	A	EA 1	*	*	*	*	10	
(20)		ROTOR, MAGNETO 230360 (34199)	A	EA 1					10	7
P O	2805-888-9239	COIL, MAGNETO 230075 (34199)	A	EA 1	*	*	*	1	10	8
P O	5910-509-9603	CONDENSER 220082 (34199)	A	EA 1	*	1	2	3	10	9
P O	5310-043-1702	WASHER, TENSION: ROTGR 230148 (34199)		EA 1	*	*	*	*	10	10
P O	5935-919-593C	CABLE, S PARK PLUG A231408 (34199)		EA 1	*	*	1	1	10	11
(20)		CLAMP, COIL 210293 (34199)		EA 2					10	12
P O	2920-288-312E	SPARK PLUG 231410 (34199)		EA 1	*	1	2	3	10	13
P O	5305-353-693E	SCREW, MACHINE: BREAKER ASSEMBLY MTG X131-1 (34199)		EA 2	*	*	*	*	10	14
P O	5310-543-5933	WASHER, LOCK: BREAKER ASSEMBLY MTG X22-9 (34199)		EA 2	*	*	*	*	10	15
P O	2920-564-250E	BREAKER ASSEMBLY A220474 (34199)		EA 1	*	1	2	3	10	16
P O	2920-718-5873	ROD, BREAKER X389-2 (34199)		EA 1	*	*	*	*	10	17
P O	5310-543-5933	WASHER, LOCK: BREAKER COVER MTG X22-9 (34199)		EA 2	*	*	*	*	10	18

MR DDE	FEDERAL STOCK NUMBER	DESCRIPTION REF NUMBER & MFR CODE	USABLE ON CODE	UNIT OF MEAS	QTY INC IN UNIT	15-DAY ORGANIZATIONAL MAINTENANCE ALW				ILLUSTRATION	
						(a)	(b)	(c)	(d)	(a)	(b)
						1-5	6-20	21-50	51-100	FIG. NO.	ITEM NO.
O	5305-353-6938	SCREW, MACHINE: BREAKER COVER MTG X131-1 (34199)		EA	2	*	*	*	*	10	19
X20		COVER, BREAKER 232535 (34199)		EA	1					10	20
I		GASKET: BREAKER COVER 220174 (34199) (PART OF SET, FSN 2805-507-1466)		EA	1					10	21
O	5930-013-0401	SWITCH, ELECTRICAL, STOP 223072 (34199)		EA	1	*	*	*	1	10	22
O	2920-848-3207	STATOR ASSEMBLY A231632 (34199)	B	EA	1	*	*	*	*	10	23
O	2920-848-3232	ROTOR 231631 (34199)	B	EA	1	*	*	1	1	10	24
O	2920-023-5167	COIL ASSEMBLY 231718 (34199)	B	EA	1	*	*	*	1	10	25
20		CORE GROUP 232834 (34199)	B	EA	1					10	26
O	5910-780-8781	CONDENSER ASSEMBLY 231719 (34199)	B	EA	1	*	1	2	3	10	27
O	5310-543-5931	WASHER, LOCK: CONDENSER MTG X22-9 (34199)	B	EA	1	*	*	*	*	10	28
O	5305-052-9051	SCREW, MACHINE: CONDENSER MTG X67-39 (34199)	B	EA	1	*	*	*	*	10	29
		GROUP 10 - ENGINE BLOCK, CYLINDER HEAD, CRANKSHAFT, OIL PAN									
O	2805-574-0001	SCREW: CYLINDER HEAD MTG 230175 (34199)		EA	6	*	*	*	*	11	1
O	5310-778-0261	WASHER, FLAT: CYLINDER HEAD MTG 220534 (34199)		EA	7	*	*	*	*	11	2
O	5305-818-7709	SCREW: CYLINDER HEAD MTG 230992 (34199)		EA	1	*	*	*	*	11	3
O	2805-021-2312	HEAD, CYLINDER A231413 (34199)		EA	1	*	*	*	*	11	4
I1		GASKET: CYLINDER HEAD 230024 (34199) (PART OF SET, FSN 2805-507-1466)		EA	1					11	5
O	5315-011-4813	KEY, MACHINE: PULLEY X286-10 (34199)		EA	1	*	*	*	*	11	10
I1		GASKET: OIL PAN 230057 (34199) (PART OF SET, FSN 2805-507-1466)		EA	1					11	16
P O	4730-724-6067	PLUG, MAGNETIC: OIL PAN DRAIN X305-4 (34199)		EA	1	*	*	*	*	11	17
X20		PAN, OIL 231417 (34199)		EA	1					11	18
X20		COVER, VALVE A230774 (34199)		EA	1					11	19
P O	5310-584-5005	NUT: BREATHER MTG X81-1 (34199)		EA	1	*	*	*	*	11	20
P O	5310-543-2705	WASHER, LOCK: BREATHER MTG X20-1 (34199)		EA	1	*	*	*	*	11	21
X1		GASKET: VALVE COVER 230048 (34199) (PART OF SET, FSN 2805-507-1466)		EA	1					11	22

(1) SMR CODE	(2) FEDERAL STOCK NUMBER	(3) DESCRIPTION REF NUMBER & MFR CODE	(4) USABLE ON CODE	(5) UNIT OF MEAS QTY INC IN UNIT	(6) 15-DAY ORGANIZATIONAL MAINTENANCE ALLOW				(7) ILLUS- TRATION	
					(a)	(b)	(c)	(d)	(a)	(b)
					1-5	6-20	21-50	51-100	FIG. NO	ITEM NO
P 0	5330-582-2655	SEAL, BREATHER 230046 (34199)		EA 1	•	•	•	•	11	23
P 0	2990-718-5943	MUFFLER 230505 (34199)		EA 1	•	•	•	•	11	24
P 0	5975-050-3066	NUT, LOCK; MUFFLER AC1536 (34199)		EA 1	•	•	•	•	11	25
P 0	4730-246-9219	ELBOW, STREET; MUFFLER 230600 (34199)		EA 1	•	•	•	•	11	26
P 0	4730-196-2059	NIPPLE, PIPE; MUFFLER ELBOW X218-24 (34199)		EA 1	•	•	•	•	11	27
P 0	6680-875-9420	DIP STICK A230092 (34199)		EA 1	•	•	•	•	11	28
P 0	5307-690-0170	STUD, PLAIN; VALVE COVER 230043 (34199)		EA 1	•	•	•	•	11	30
P 0	5305-939-9621	SCREW, CAP, HEXAGON HEAD; OIL PAN MOUNTING X154-3 (34199)		EA 4	•	•	•	•	11	31
P 0	5310-809-4061	WASHER, FLAT; OIL PAN MTG G120388 (24617)		EA 4	•	•	•	•	11	32
P 0	5305-018-0016	SCREW, CAP, HEXAGON HEAD; FUEL PUMP PAD MTG X132-6 (34199)		EA 2	•	•	•	•	11	34
P 0	5310-812-3373	WASHER, LOCK; FUEL PUMP PAD COVER MOUNTING X22-11 (34199)		EA 2	•	•	•	•	11	35
20		COVER; FUEL PUMP PAD 240282 (34199)		EA 1					11	36
1		GASKET; FUEL PUMP PAD COVER 240281 (34199) (PART OF SET, FSN 2805-507-1466)		EA 1					11	37
0	2805-507-1163	BREATHER ASSEMBLY A230066 (34199)		EA 1	•	•	•	•	11	38
0	5315-253-8727	PIN, GOVERNOR STOP 231355 (34199)		EA 1					11	39
0	5310-276-3451	WASHER; GOVERNOR STOP PIN X25-12 (34199)		EA 1	•	•	•	•	11	40
0	4330-907-9650	FILTER 231419 (34199)		EA 1	•	•	•	•	11	41
		GROUP 13 - GOVERNOR AND CONTROLS								
20		LEVER, GOVERNOR 232614 (34199)		EA 1					14	1
0	4520-608-4653	LINKAGE, GOVERNOR 230078 (34199)		EA 1	•	•	•	•	14	2
0	5305-954-8974	SCREW; SPRING MTG X67-46 (34199)		EA 1	•	•	•	•	14	3
0		WASHER, FLAT; SPRING MTG X25-48 (34199)		EA 1	•	•	•	•	14	4
0	5305-209-2152	SCREW, CAP, HEXAGON HEAD; LEVER X5-7 (34199)		EA 1	•	•	•	•	14	5
0	5310-012-0385	WASHER, FLAT; LEVER X25-72 (34199)		EA 2	•	•	•	•	14	6
0	2990-670-4590	DISK, REGULATING 230149 (34199)		EA 1	•	•	•	•	14	8
0		BRACKET; SPEED CONTROL 230477 (34199)		EA 1					14	9

(1) SMR CODE	(2) FEDERAL STOCK NUMBER	DESCRIPTION REF NUMBER & MFR CODE	USABL ON CODE	(4) INIT OF EA	(5) QT IN UNI	(6) 15-DAY ORGANIZATIONAL MAINTENANCE ALW				(7) ILLUS- TRATION	
						(a)	(b)	(c)	(d)	(a)	(b)
						1-5	6-21	21-51	51-100	FIG NO	ITEM NO.
P 0	5310-584-500	NUT, PLAIN, HEXAGON: LEVER SCREW X8 1-1 (34199)		EJ				*	14	16	
P 0	5340-012-052	SPRING, GOVERNOR 232617 (34199)		EJ				1	14	17	
		GROUP 15 - COMPRESSOR AND DRIVE COUPLING									
P 0	4310-125-633	COUPLING, FLEXIBLE: COMPRESSOR MTG CFB70003 (82254)		EJ				*	16	1	
20		FLANGE, MOUNTING CFD70079 (82254)		EJ					16	2	
20		TUBE: DEFLECTOR PLATE MTG CFA70117 (82254)		EJ					16	3	
P 0	5310-167-072	WASHER, LOCK: FLANGE TO ENGINE AND COMPRESSOR G138538 (24617)		EJ				*	16	4	
P 0	5306-207-837	BOLT, MACHINE: FLANGE TO ENGINE G142271 (24617)		EA				*	16	5	
P 0	5306-576-052	SCREW, CAP, HEXAGON HEAD: FLANGE TO COMPRESSOR G122033 (24617)		EA				*	16	6	
P 0	4310-132-154	COMPRESSOR CFR7002 (82554)		EA	1	*	*	*	16	7	
P 0	5306-655-617	BOLT: COMPRESSOR MTG G122040 (24617)		EA	2	*	*	*	16	8	
P 0	5310-167-072	WASHER, LOCK: COMPRESSOR MTG G138538 (24617)		EA	2	*	*	*	16	9	
P 0	5305-269-321	BOLT: FLANGE TO ENGINE G122201 (24617)		EA	2	*	*	*	16	10	
P 0	5305-124-589	SETScrew: COUPLING TO COMPRESSOR G191950 (24617)		EA	5	*	*	*	16	11	
P 0	5315-362-021	KEY, SQUARE: COUPLING CFA70114 (82254)		EA	1	*	*	*	16	12	
		GROUP 16 - AIR DISCHARGE SYSTEM									
P 0	1820-125-6325	VALVE, RELIEF F1648 (34494)		EA	1	*	*	1	1	17	1
20		TEE, PIPE: RELIEF VALVE G444122 (24617)	A	EA	1	*	*	*	*	17	2
P 0	1730-718-2654	NIPPLE, PIPE: ELBOW TO COMPRESSOR G443990 (24617)		EA	1	*	*	*	*	17	3
P 0	4310-582-5965	WASHER, LOCK: MANIFOLD MTG G121753 (24617)	A	EA	2	*	*	*	*	17	4
P 0	4305-720-8154	SCREW, MACHINE: MANIFOLD CLAMP G122047 (24617)	A	EA	2	*	*	*	*	17	5
P 0	4685-236-3976	GAGE, PRESSURE CFA70007 (82254)		EA	1	*	*	*	*	17	6
20		CLAMP: MANIFOLD MTG CFB70103 (82254)	A	EA	2					17	7
20		MANIFOLD CFD70129 (82254)	A	EA	1					17	8
P 0	1730-249-1476	ELBOW: RELIEF VALVE G119097 (24617)	B	EA	1	*	*	*	*	17	9
20		MANIFOLD CFD70129 (82254)		EA	1					17	10

(1) SMR CODE	(2) FEDERAL STOCK NUMBER	(3) DESCRIPTION REF NUMBER & MFR CODE	(4) USABLE ON CODE	(5) QTY INC IN INIT	(6)				(7)	
					15-DAY ORC MAINTEN		IZA ICE	NAL V	ILLUS- TRATION	
					(a) 1-5	(b) 6-20	(c) 31-50	(d) 1-100	(a) FIG. NO.	(b) ITEM NO.
P O	110-655-5789	ASHER, LOCK: MANI FOLD MTG G138538 (24617)		EA 2	•	•	•	•	17	11
P O	106-637-9674	DLT: MANI FOLD MTG G122027 (24617)		EA 2	•	•	•	•	17	12
P O	105-145-6814	CREW, MACHINE: CONNECTOR MTG G121966 (24617)	A	EA 4	•	•	•	•	17	13
P O	110-818-3041	ASHER, LOCK: CONNECTOR MTG	A	EA 4	•	•	•	•	17	14
X20		CONNECTOR: MANI FOLD MTG G118752 (24617)	A	EA 2					17	15
P O	130-489-8252	DUPLER, QUICK DISCONNECT 3103 (14127)		EA 10	•	•	1	1	17	16
P O	130-277-9174	LBOW: LINE CYLINDER HEAD G118757 (24617)		EA 2	•	•	•	•	17	17
MFO		LINE ASSEMBLY: OUTLET VALVE TO MANIFOLD CF870014 (82254) MANUFACTURE FROM:		EA 1					17	18
P O	110-277-5522	TUBE, COPPER: 1 1/2 IN. REQUIRED								
P O	130-012-0141	NUT, TUBE COUPLING: 2 EA								
P O	130-270-4607	CONNECTOR: LINE TO MANI FOLD G118752 (24617)		EA 2	•	•	•	•	17	19
P O	14820-410-1925	OCK, DRAIN: MANI FOLD MS35785-7 (96906)		EA 1	•	•	•	•	17	20
X20		LATE, INSTRUCTION MOUNTING CF070152 (82254)	B	EA 1					17	21
X20		LATE, INSTRUCTION MOUNTING CF070004 (82254)	A	EA 1					17	22
MFO		LINE ASSEMBLY CF870108 (82254) MANUFACTURE FROM:		EA 1						
P O	110-277-5522	TUBE, COPPER								
P O	130-012-0141	NUT, TUBE COUPLING: 2 EA								
		GROUP 17 - COMPRESSOR COOLING								
X20		SHROUD CFR70076 (82254)		EA 1					18	1
P O	106-720-8258	DLT: SHROUD MTG G122089 (24617)		EA 4	•	•	•	•	18	2
P O	110-655-5789	ASHER, LOCK: SHROUD MTG G138538 (24617)		EA 4	•	•	•	•	18	3
X20		SHROUD CFR70075 (82254)		EA 1					18	4
P O	110-582-5965	ASHER, LOCK: SHROUD MTG G121753 (24617)		EA 4	•	•	•	•	18	5
P O	105-068-0502	CREW, CAP: HEXAGON HEAD: SHROUD MTF G121887 (24617)		EA 4	•	•	•	•	18	6
P O	105-724-5903	SETScrew: BLOWER WHEEL G102582 (24617)		EA 1	•	•	•	•	18	7
P O		WHEEL, BLOWER R700-225S (95933)		EA 1	•	•	•	•	18	8
P O	105-269-2808	DLT: BLOWER MTG MS90726-65 (96906)		EA 1	•	•	•	•	18	9
X20		SCREEN: SHROUD CFA70088 (82254)		EA 1					18	10

(1) SMR CODE	(2) FEDERAL STOCK NUMBER	DESCRIPTION REF NUMBER & MFR CODE	(4) USABLI ON CODE	(5) QT: INC IN UNI	(6) 15-DAY ORGANIZATIONAL MAINTENANCE ALW				(7) ILLUS- TRATION	
					(a)	(b)	(c)	(d)	(c)	(b)
					1-5	6-21	21-51	51-100	FI NI	ITEA NO.
20		RETAINER: SCREEN CFC70089 (82254)		1					11	
0	5310-413-537	WASHER, LOCK: RETAINER MTG G121801 (24617)		4	*	*	*	*	11	12
0	5305-050-922	SCREW, MACHINE: RETAINER MTG G155103 (24617)		4	*	*	*	*	11	13
0	5310-167-072	WASHER, LOCK: SHROUD MTG G138538 (24617)		4	*	*	*	*	11	14
0	5306-754-428	SCREW, CAP, H EXAGON HEAD: SHROUD MOUNTING G138227 (24617)		4	*	*	*	*	11	15
20		SHROUD: COMPRESSOR BOTTOM CF070077 (82254)		1					11	16
		GROUP 18 - COMPRESSOR CYLINDER HEAD								
0		HEAD ASSEMBLY CFC70100 (82254)		1					15	
0	5305-576-2514	SCREW, MACHINE: INTAKE VALVE G154976 (24617)		4	*	*	*	*	15	1
0	1310-906-7916	INTAKE VALVE CFA70095 (82254)		2	*	1	1	3	15	2
0	1310-132-1540	HEAD CF070074 (82254)		2	*	*	*	*	15	3
0		PLATE: AIR INTAKE CFA70091 (82254)		2					15	4
0	5940-496-4174	FILTER, AIR INTAKE OMJ (00736)		2	*	*	*	*	15	5
0		RETAINER, CHECK VALVE CFC70041 (82254)		2	*	*	*	*	15	6
0	1820-127-0216	VALVE, CHECK CFB70096 (82254)		2	*	*	*	*	15	7
0	5305-208-7182	SCREW, MACHINE: GUIDE MTG G153421 (24617)		2	*	*	*	*	15	8
		GUIDE CFB70122 (82254)		2					15	9
X1		SPRING CFA70118 (82254)		2					15	10
X1		DISK CFA70120 (82254)		2					15	11
X1		BODY CFC70123 (82254)		2					15	12
P 0	305-058-3715	SCREW: CYLINDER HEAD MTG G9421707 (24617)		24	*	*	*	*	15	13
P 0	310-655-5789	WASHER, LOCK: CYLINDER HEAD MTG G138538 (24617)		24	*	*	*	*	15	14
P 0	330-436-7220	WASHER: VALVE CFA70124 (82254)		2	*	*	*	*	15	15
X20		SHIM: CYLINDER HEAD, .016 IN. THK CFA70137-1 (82254)	B	24					15	16
X20		SHIM: CYLINDER HEAD, .025 IN. THK CFA70137-2 (82254)	B	24					15	16
X20		SHIM: CYLINDER HEAD, .032 IN. THK CFA70137-3 (82254)	B	24					15	16

(1) SM COL	(2) FEDERAL STOCK NUMBER	(3) DESCRIPTION	J A	C I U	(6) ORGANIZATIONAL MAINTENANCE				(7) ILLUSTRATION	
					1	2	3	4	1	2
					(1)	(1)	(1)	(1)	(1)	(1)
		REF NUMBER & MFR CODE								
		GROUP 19 - COMPRESSOR HOUSING, PISTON AND SHAFT								
20		COUNTERBALANCE: COMPRESSOR DRIVE CFB70107 (82254)							20	8
0	5305-124-589	SETS CREW: COUNTERBALANCE G191950 (24617)							20	9
0	5306-543-440	BOLT, MACHINE: BEARING HOUSING MTG G122017 (24617)							20	10
0	5310-167-072	WASHER, LOCK: BEARING HOUSING MTG G138538 (24617)							20	11
0	5310-906-791	DIAPHRAGM CFC70083 (82254)						3	2	14
20		PLATE, BACKUP CFB70090 (82254)							20	15
0	5305-939-918	SCREW, MACHINE: BACKUP PLATE MTG G155941 (24617)	E	1					20	16
		GROUP 20 - REPAIR KITS								
0	5805-507-146	GASKET SET: ENGINE OVERHAUL 230165 (34199)	E							
		1-GASKET								3
		1-GASKET								6
		1-GASKET								2
		1-GASKET								1
		1-GASKET								5
		1-GASKET								4
		1-GASKET								6
		1-GASKET								2
		1-GASKET								7
0	910-075-039	KIT, REPAIR: CARBURETOR 231555 (34199)		1				1		
		-GASKET							E	3
		-GASKET							E	5
		-GASKET							E	5
		-PIN							B	7
		-NEEDLE							B	1
		-SEAT							B	1
		-GASKET							3	

(1) LINE	FEDERAL STOCK NUMBER	DESCRIPTION EF NUMBER & MFR CODE	USABLE ON CODE	(1) UNIT	(5) QTY IN UNIT	(6) D-DAY MAINT ALLOWANCE			(7) D-DAY GS MAINT ALLOWANCE			(8) YR LW 00 DUPI RTGY	(9) CLASSIFICATION	
						a)	b)	c)	a)	b)	c)		1)	2)
						20	5	10	20	5	10		I.G. D.	E.M. D.
		SECTION V - REPAIR PARTS FOR DS, GS MAINTENANCE												
		GROUP 01 - BOX AND FRAME ASSEMBLY												
		BOX, PARTS CFR70016 (82254)	A	EA									1	1
		FRAME ASSEMBLY CFD70000 (82254)	A	EA									1	2
	310-655-6457	STRAP, PLAIN, HEXAGON: GROUND STRAP G120377 (24617)		EA									1	3
	310-616-7998	LATCH, LOCK: GROUND STRAP G138542 (24617)		EA									1	4
	340-020-8588	LOCK MOUNT J7153-1 (76005)		EA	1	2	4	1	2		50		1	5
	150-268-3659	STRAP, GROUND: ENGINE TO FRAME EG8 (77060)		EA			1				10		1	6
	305-012-0233	BOLT, MACHINE: GROUND STRAP G120233 (24617)		EA									1	7
X20		BOX, PARTS CFR70144 (82254)	B	EA									2	1
	320-050-1207	RIVET: HASP MTG G104149 (24617)		EA									2	2
		HASP: PADLOCK CFA70030 (82554)		EA									2	3
		PADLOCK 382 (30399)		EA									2	4
		RIVET: BRACKET MTG MS16535-156 (96906)		EA									2	5
		BRACKET: LOCK CFB70138 (82254)		EA									2	6
	320-050-1206	RIVET: HANDLE MTG G9402099 (24617)		EA									2	7
		HANDLE, BOX MS35791-2 (96906)		EA									2	8
		FRAME ASSEMBLY CFD70150 (82254)		EA									2	9
	320-042-5284	RIVET: SPRING BOLT G104150 (24617)		EA									2	0
X20		SPRING BOLT: BOX TO FRAME MOMB1244 (39428)	B	EA									2	1
		GROUP 02 - GUN ASSEMBLY, DUSTING												
	4230-869-7831	GUN ASSEMBLY, DUSTING CFD70163 (82254) (COMPONENTS SAME AS GUN ASSEMBLY, FSN 3740-253-5715, P/N CFD70033 (82254), EXCEPT WHERE INDIVIDUAL COMPONENTS ARE ANNOTATED)	A	EA			1			1	12		3	
	3740-253-5715	GUN ASSEMBLY, DUSTING CFD70033 (82254)	B	EA			1			1	12		3	
	3740-437-7142	NOZZLE: GUN CFA70064 (82254)		EA							5		3	1
	4730-457-6391	NOSE: GUN NOZZLE CFA70034 (82254)		EA							5		3	2
	5305-724-5835	SETScrew: DRILL PASSAGE PLUG, HEXAGON SOCKET HEAD, CUP POINT, STEEL, 3/8-16 THD SIZE, 1/4 IN. LG MS51963-99 (96906)	A	EA									3	3

(1) IR DE	(2) FEDERAL STOCK NUMBER	DESCRIPTION	USABLE ON CODE	(4) UNIT OF MEAS	(5) QTY INC IN UNIT	(6) 30-DAY DS MAINT ALLOWANCE			(7) 30-DAY GS MAINT ALLOWANCE			(8) 1-YR ALW PER 100 EQUIP CNTGY	(9) ILLUS- TRATION	
						(a)	(b)	(c)	(a)	(b)	(c)		(a)	(b)
						1-20	21-50	51-100	1-20	21-50	51-100		FIG. NO.	ITEM NO.
D		HANDLE, DUSTING GUN CFD70033 (82254)		EA	1								3	4
D	5315-582-2466	PIN, SPRING; TRIGGER G9415236 (24617)		EA	2	•	•	•	•	•	•	•	3	5
D	4730-103-5390	NIPPLE: GUN TO HOSE 103 (14127)		EA	1	1	2	4	1	2	4	50	3	6
D	5305-723-9387	SETScrew: VALVE RETAINING G127782 (24617)		EA	1	•	•	•	•	•	•	•	3	7
X2D		TRIGGER CFB70037 (82254)		EA	1								3	8
D	4230-123-2993	CONTAINER CFB70160 (82254)	B	EA	1	1	3	5	1	3	5	60	3	9
D		STRAP; CONTAINER MTG CFB70172 (82254)	B	EA	1	1	3	5	1	3	5	60	3	10
D	5330-436-7190	GASKET: COVER CFA70158 (82254)	B	EA	1	1	3	5	1	3	5	60	3	11
D		COVER, CONTAINER CFB70168 (82254)	B	EA	1								3	12
D		NUT, KNURLED; COVER MTG CFA70165 (82254)	B	EA	2	3	5	10	3	5	10	120	3	13
D	4230-087-7771	CANISTER, GUN CFC70046 (82254)	A	EA	1	1	3	5	1	3	5	60	3	14
D	5330-908-0443	GASKET: CANISTER COVER CFA70057 (82254)	A	EA	1	1	3	5	1	3	5	60	3	15
D		TUBE, INLET CFA70058 (82254) MANUFACTURE FROM:		EA	1								3	16
D	4730-585-7352	NUT: 1 REQUIRED FOR EA TUBE G120487 (24617)												
D	4730-289-8618	SLEEVE: 1 REQUIRED FOR EA TUBE G120488 (24617)												
D	4710-277-5524	TUBE: 1 1/2 IN. REQUIRED FOR EA TUBE												
D		TUBE, OUTLET CFA70059 (82254) MANUFACTURE FROM:		EA	1								3	17
D	4730-585-7352	NUT: 1 REQUIRED G120487 (24617) FOR EA TUBE												
D	4730-289-8618	SLEEVE: 1 REQUIRED FOR EA TUBE G120488 (24617)												
D	4710-277-5524	TUBE: 1 1/4 IN. REQUIRED FOR EA TUBE												
D	4730-266-0531	CONNECTOR; CANISTER TO GUN G121711 (24617)		EA	2								3	18
D		COVER, CANISTER CFC70052 (82254)	A	EA	1								3	19
D		CAP, VALVE CFB70042 (82254)		EA	1	1	2	4	1	2	4	50	3	20
D	5330-248-3838	O RING: HANDLE TO COVER MS29513-13 (96906)		EA	2	1	3	5		3	5	60	3	21
D	5330-641-4354	O RING: VALVE STEM MS29513-4 (96906)		EA	1	1	3	5	1	3	5	60	3	22
D		SPRING, VALVE CFA70038 (82254)		EA	1	1	2	4	1	2	4	50	3	23
D		STEM, VALVE CFB70039 (82254)		EA	1	2	2	4	2	2	4	50	3	24

(1) SMR CODE	(2) FEDERAL STOCK NUMBER	DESCRIPTION REF NUMBER & MFR CODE	4) USABLE ON CODE	5) UNIT OF EAS	6) 30-DAY DS MAINT ALLOWANCE			7) 10-DAY GS MAINT ALLOWANCE			8) 1-YR ARW PER 100 EQUIP CNTGY	9) LLUS- TRATION	
					(a)	(b)	(c)	(a)	(b)	(c)		a)	b)
					1-20	-50	-100	-20	-50	100		IG.	EM D.
' O	5330-248-3837	O RING: VALVE BODY MS29513-110 (96906)	EA	1	1	3	5	1	3	5	60	3	3
' O	5330-248-3831	O RING: VALVE BODY MS29513-11 (96906)	EA	1	1	3	5	1	3	5	60	3	6
' O		BODY, VALVE CF70132 (82254)	EA	1	1	2	4	1	2	4	50	3	7
' O	5330-252-6048	O RING: VALVE CAP MS29513-6 (96906)	EA	1	1	3	5	1	3	5	60	3	8
' O	4230-087-7780	DSE ASSEMBLY: DUSTING GUN CFB70097 (82254)	EA	10	1	2	4	1	2	4	50	3	9
' O		COUPLER, QUICK DISCONNECT 3603 (14127)	EA	1	1	2	4	1	2	4	50	3	0
' O		CLAMP, HOSE C3122-101 (78553)	EA	2	1	2	4	1	2	4	50	3	1
' O		HOSE CFA70098 (82254)	EA	1									2
' O		NIPPLE 163 (14127)	EA	1	1	2	4		2	4	50	3	3
		GROUP 03 - ENGINE ASSEMBLY											
' O R	2805-123-2089	ENGINE, GASOLINE K161P28975J (34199)	EA	1							5	4	1
' O	4730-511-1677	COUPLING G444098 (24617)	EA	1								4	2
' O	4730-881-3929	NIPPLE, PIPE G120146 (24617)	EA	1								4	3
' O	5305-638-9837	OLT, MACHINE: ENGINE MTG G122181 (24617)	EA	4								4	4
' O	5310-508-2673	ASHER, FLAT: ENGINE MTG G120388 (24617)	EA	4								4	5
' O	5310-655-6457	NUT, PLAIN, HEXAGON: ENGI NE MTG G120377 (24617)	EA	4								4	6
' O	5310-616-7998	WASHER, LOCK: ENGI NE MTG, INTERNAL THREAD, 3/8 IN. SCREW SIZE	EA	4								4	7
' O	4730-724-6067	BULB, PIPE: OIL DRAIN X305-4 (34199)	EA	1								4	8
		GROUP 04 - FUEL TANK AND BRACKET											
' O	5305-270-7526	SCREW, CAP, HEXAGON HEAD: FUE L TANK BRACKET MTG, 1/4-20 THD SIZE, 3/4 IN. LG X132-2 (34199)	EA	4								5	1
' O	5310-582-5965	WASHER, LOCK: FUEL TANK BRACKET MTG, 1/4 IN. SCREW SIZE	EA	4								5	2
' O		BRACKET: FUEL TANK MTG A230752 (34199)	EA	1								5	3
' O	5305-550-2618	SCREW, CAP, HEXAGON HEAD: STRAP X5-4 (34199)	EA	2								5	4
' O	5310-044-3533	NUT, PLAIN, HEXAGON: STRAP SCREW X101-8 (34199)	EA	4								5	5
' O		STRAP: FUEL TANK 230160 (34199)	EA	4								5	6
' O		TANK, FUEL 230164 (34199)	EA	4								5	7

(1) SMR ODE	FEDERAL STOCK NUMBER	DESCRIPTION REF NUMBER & MFR CODE	USABLI ON CODE	Q1 IN IN UN	(6) 30-DAY DS MAIN ALLOW E			(7) 30-DAY GS MAIN ALLOWANCE			(8) 1-YI ALI PEP 100 QU INTI	(9) ILLUS- TRATIO		
					(a)	(b)	(c)	(d)	(e)	(f)		(g)	(h)	(i)
					1-	21-	11-	1-	21-	11-		F	T	
20		WEBBING: BRACKET X295-2 (34199)		EA								1		
0	2910-132-4697	CAP: FUE L TANK 236655 (34199)		EA								1		
		GROUP 05 - FUEL FILTER												
0	2910-544-0531	FILTER, FUEL 210101A (34199) (COMPONENTS SAME AS FILTER, FSN 2910-905-9792)	A	EA								1		
0	2910-905-9792	FILTER, FUEL MS51086-1 (96906)	B	EA								1		
0		BOWL, SEDIMENT, FUEL 220879 (34199)		EA								1		
		GASKET: BOWL 220881 (34199) (PART OF SET, FSN 2805-507-1466)		EA								6		
0	1730-203-5364	NIPPLE, FILTER X217-6 (34199)		EA								6		
0	1730-277-8261	ELBOW, PIPE TO TUBE: LINE TO FILTER AND CARBURETOR X447-10 (34199)		EA								6		
0	1910-023-5182	LINE, FUEL: FILTER TO CARBURETOR A231420 (34199)		EA								11		
		GROUP 06 - AIR CLEANER												
0	305-012-0585	SCREW, CAP, HEXAGON HEAD: BRACE TO ELBOW X5-1 (34199)		EA								7		
0	310-543-2705	WASHER, LOCK: BRACE TO ELBOW X20-1 (34199)		EA								7		
0	305-151-1571	SCREW, CAP, HEXAGON HEAD: ELBOW MTG X51-41 (34199)		EA								7		
0	310-010-6496	WASHER, LOCK: ELBOW MTG X18-2 (34199)		EA								7		
0		ELBOW: AIR CLEANER TO CARBURETOR 230553 (34199)		EA	1							7		
0		GASKET: ELBOW MTG 220937 (34199) (PART OF SET, FSN 2805-507-1466)		EA	1							7		
0	305-274-1128	SCREW, CAP, HEXAGON HEAD: BRACE MTG X134-1 (34199)		EA	1							7		
0	310-012-0385	WASHER, FLAT: BRACE MTG X25-63 (34199)		EA	1							8		
0		BRACE: AIR CLEANER 230539 (34199)		A	1							9		
0	305-015-4976	SCREW, SELF-TAPPING: AIR CLEANER TO ELBOW X67-27 (34199)		A	3							0		
0	340-404-7296	AIR CLEANER A230538 (34199)										5		

(1) SMR CODE	(2) FEDERAL STOCK NUMBER	(3) DESCRIPTION USABLE ON CODE	(4) UNIT OF EA	(5) QTY INC IN UNIT	(6) DS MAIN WANCE			(7) 30-DAY GS MAIN ALLOWANCE			(8) 1-YR ALW PER 100 EQUIP CNTG	(9) ILLUS- TRATION	
					(a) 1-2	(b) 1-5	(c) 1-11	(a) 1-2	(b) 1-50	(c) 1-1		(a) FILE NO	(b) PAGE NO
X20		SCREEN, PULLEY 230098 (34199)	EA									9	8
X20		RETAINER, SCREEN 230363 (34199)	EA									9	9
X20		HOUS.ING BLOWER 232654 (34199)	EA									9	10
P 0	5310-027-3969	NUT, PLAIN HEXAGON: PULLEY X85-1 (34199)	EA									9	11
P 0	5310-655-5789	WASHER, LOCK: PULLEY X24-2 (34199)	EA									9	12
		GROUP 09- IGNITION COMPONENTS											
P 0	5305-052-9051	SCREW, MACHINE: SWITCH AND CONDENSER MOUNTING X67-39 (34199)	EA									0	1
P 0	5310-543-5933	WASHER, LOCK: SWITCH AND CONDENSER MOUNTING X22-9 (34199)	EA									0	2
Q20		LEAD, BREAKER A231982 (34199)	EA	1								0	3
Q20		LEAD, BREAKER A231942 (34199)	EA	1								0	3
Q20		LEAD, MAGNETO GROUND A231945 (34199)	EA	1								0	4
P 0	5310-812-3373	WASHER, LOCK: CORE GROUP MTG X22-11 (34199)	EA	2								0	5
P 0	5305-527-5726	SCREW, CAP, HEXAGON HEAD: CORE GROUP MTG X132-4 (34199)	EA	2								0	6
P 0	5920-562-1224	MAGNETO ASSEMBLY C230437 (34199)	EA	1							10	0	
Q20		ROTOR, MAGNETO 230360 (34199)	EA	1								0	7
P 0	5805-888-9239	COIL, MAGNETO 230075 (34199)	EA	1		1	2		1		20	0	8
P 0	5910-509-9603	CONDENSER 220082 (34199)	EA	1		3	6	2	3		75	0	9
P 0	5310-043-1702	WASHER, TENSION: ROTOR 230148 (34199)	EA	1								0	0
P 0	5935-919-5930	CABLE, SPARK PLUG A231408 (34199)	EA	1		1	2	1	1		25	0	1
Q20		CLAMP, COIL 210293 (34199)	EA	2								0	2
P 0	5920-288-3126	SPARK PLUG 231410 (34199)	EA	1		3	6	2	3		75	0	3
P 0	305-353-6938	SCREW, MACHINE: BREAKER ASSEMBLY MTG X131-1 (34199)	EA	2								0	4
P 0	5310-543-5933	WASHER, LOCK: BREAKER ASSEMBLY MTG X22-9 (34199)	EA	2								0	5
P 0	5920-564-2508	BREAKER ASSEMBLY A220474 (34199)	EA	1		3	6	2	3		75	0	5
P 0	5920-718-5873	ROD, BREAKER X389-2 (34199)	EA	1			1				10	0	7
P 0	5310-543-5933	WASHER, LOCK: BREAKER COVER MTG X22-9 (34199)	EA	2								0	8

(1) SMR CODE	FEDERAL STOCK NUMBER	DESCRIPTION REF NUMBER & MFR CODE	USABLE ON CODE	(4) UNIT OF MEAS	(5) QT IN UN	(6) 30-DAYDS MAIN ALLOWANCE			(7) 30-DAY GS MAI ALLOWANCE			(8) 1-YE ALV PER 100 EQUI CNT	(9) ILLUS- TRATION	
						(a)	(b)	(c)	(c)	(b)	(c)		FI NC	(b) ITEM NO.
						1-20	21-	1-	1-	21-	51-			
P 0	5305-353-6938	SCREW, MACHINE: BREAKER COVER MTG X131-1 (34199)		EA								10	19	
20		COVER, BREAKER 232535 (34199)		EA								10	20	
11		GASKET: BREAKER COVER 220174 (34199) (PART OF SET, FSN 2805-507-1466)		EA								10	21	
0	5930-013-0401	SWITCH, ELECTRICAL, STOP 223072 (34199)		EA							1	10	22	
0	2920-848-3207	STATOR ASSEMBLY A231632 (34199)	B	EA								10	23	
0	2920-848-3232	ROTOR 231631 (34199)	B	EA							2	10	24	
0	2920-023-5167	COIL ASSEMBLY 231718 (34199)	B	EA							2	10	25	
20		CORE GROUP 232834 (34199)	B	EA								10	26	
0	5910-780-8781	CONDENSER ASSEMBLY 231719 (34199)	B	EA							7	10	27	
0	5310-543-5933	WASHER, LOCK: CONDENSER MTG X22-9 (34199)	B	EA								10	28	
0	5305-052-9051	SCREW, MACHINE: CONDENSER MTG X67-39 (34199)	B	EA								0	29	
		GROUP 10 - ENGINE BLOCK, CYLINDER HEAD, CRANKSHAFT, OIL PAN												
0	2805-574-0001	CREW: CYLINDER HEAD MTG 230175 (34199)		EA								1	1	
0	5310-778-0261	WASHER, FLAT: CYLINDER HEAD MTG 220534 (34199)		EA								1	2	
0	5305-818-7709	CREW: CYLINDER HEAD MTG 230992 (34199)		EA								1	3	
0	2805-021-2312	GAD, CYLINDER A231413 (34199)		EA	1							5	4	
		GASKET: CYLINDER HEAD 230024 (34199) (PART OF SET, FSN 2805-507-1466)		EA	1							1	5	
F		LOCK, CYLINDER ASSEMBLY A231219 (34199)		EA	1							5	1	
F		BLOCK, CYLINDER 231220 (34199)		EA	1							1	6	
F	805-875-4301	VAL, OIL: CRANKSHAFT, REAR X271-26 (34199)		EA	1	1	1	2	1	1		25	7	
F	1110-155-6200	BEARING, BALL, ANNULAR: CRANKSHAFT 230151 (34199)		EA	2	1	1	2	1	1		25	8	
F	805-507-1468	CRANKSHAFT 230395 (34199)		EA	1							5	9	
0	315-011-4813	Y, MACHINE: PULLEY X286-10 (34199)		EA	1								0	
22F		PLATE, BEARING RETAINER 231409 (34199)	A	EA	1								1	
22F	805-023-5165	PLATE, BEARING RETAINER 231984 (34199)	B	EA	1								1	
F	310-818-3041	WASHER, LOCK: BEARING PLATE MTG X25-55 (34199)		EA	4								2	

(1) SMR CODE	(2) FEDERAL STOCK NUMBER	(3) DESCRIPTION USABLE ON CODE	(4) UNIT OF MEAS	(5) QTY INC IN UNIT	(6) 30-DAY GS MAINT ALLOWANCE			(7) 30-DAY GS MAINT ALLOWANCE			(8) 1-YR ALW PER 100 EQUIP CNTGY	(9) ILLUS- TRATION	
					(a)	(b)	(c)	(a)	(b)	(c)		(a)	(b)
					1-20	21-50	51-100	1-20	21-50	51-100		FIG. NO.	ITEM NO.
P F	5305-017-9795	SCREW, CAP, HEXAGON HEAD: BEARING PLATE MTG X5-8 (34199)	EA	4	•	•	•	•	•	•	•	11	13
(1)		GASKET: BEARING PLATE 230071 (34199) (PART OF SET, FSN 2805-507-1466)	EA	1								11	14
P F	2805-875-4300	SEAL, OIL CRANKSHAFT, FRONT X271-27 (34199)	EA	1	1	1	2	1	1	2	25	11	15
(1)		GASKET: OIL PAN 230057 (34199) (PART OF SET, FSN 2805-507-1466)	EA	1								11	16
P O	4730-724-6067	PLUG, MAGNETIC: OIL PAN DRAIN X305-4 (34199)	EA	1	•	•	•	•	•	•	•	11	17
(20)		PAN, OIL 231417 (34199)	EA	1								11	18
(20)		COVER, VALVE A230774 (34199)	EA	1								11	19
P O	5310-584-5005	NUT: BREATHER MTG X81-1 (34199)	EA	1	•	•	•	•	•	•	•	11	20
P O	5310-543-2705	WASHER, LOCK: BREATHER MTG X20-1 (34199)	EA	1	•	•	•	•	•	•	•	11	21
(1)		GASKET: VALVE COVER 230048 (34199) (PART OF SET, FSN 2805-507-1466)	EA	1								11	22
P O	5330-582-2655	SEAL, BREATHER 230046 (34199)	EA	1	1	2	4	1	2	4	50	11	23
P O	2990-718-5943	MUFFLER 230505 (34199)	EA	1	•	•	1	•	•	1	10	11	24
P O	5975-050-3066	NUT, LOCK: MUFFLER A61536 (34199)	EA	1	•	•	•	•	•	•	•	11	25
P O	4730-246-9219	ELBOW, STREET: MUFFLER 230600 (34199)	EA	1	•	•	•	•	•	•	•	11	26
P O	4730-196-2059	NIPPLE, PIPE: MUFFLER ELBOW X218-24 (34199)	EA	1	•	•	•	•	•	•	•	11	27
P O	6680-875-9420	DIP STICK A230092 (34199)	EA	1	•	•	1	•	•	1	10	11	28
P F	5340-601-1327	PLUG, EXPANSION: BLOCK X230-11 (34199)	EA	1	1	1	2	1	1	2	25	11	29
P O	5307-690-0170	STUD, PLAIN: VALVE COVER 230043 (34199)	EA	1	•	•	•	•	•	•	•	11	30
P O	5305-939-9621	SCREW, CAP, HEXAGON HEAD: OIL PAN MOUNTING X154-3 (34199)	EA	4	•	•	•	•	•	•	•	11	31
P O	5310-809-4061	WASHER, FLAT: OIL PAN MTG G120388 (24617)	EA	4	•	•	•	•	•	•	•	11	32
P F	5315-362-0212	KEY, MACHINE: DRIVE COUPLING CFA70114 (82254)	EA	1	•	•	•	•	•	•	•	11	33
P O	5305-018-0016	SCREW, CAP, HEXAGON HEAD: FUEL PUMP PAD MTG X132-6 (34199)	EA	2	•	•	•	•	•	•	•	11	34
P O	5310-812-3373	WASHER, LOCK: FUEL PUMP PAD COVER MOUNTING X22-11 (34199)	EA	2	•	•	•	•	•	•	•	11	35
(20)		COVER: FUEL PUMP PAD 240282 (34199)	EA	1								11	36
(1)		GASKET: FUEL PUMP PAD COVER 240281 (34199) (PART OF SET, FSN 2805-507-1466)	EA	1								11	37

SMR CODE	FEDERAL STOCK NUMBER	DESCRIPTION REF NUMBER & MFR CODE	USABLE ON CODE	T IS	TY NC M NIT	(6)			(7)			(8)		(9)	
						DA	S h	T	30-DAY GS MAINT ALLOWANCE			1-YR ALW PER 100 EQUIP CNTGY	ILLUS-TRATION		
						a)	b)	c)	(a)	b)	c)		o)	i)	
20	-50	100	1-20	-50	-100	IG.	EM.								
P O	105-507-1163	BREATHER ASSEMBLY A230066 (34199)		A	1	•	•	1	•	•	1	10	1	38	
P O	115-253-8727	PIN, GOVERNOR STOP 231355 (34199)		A	1	•	•	1	•	•	1	10	1	3	
P O	110-276-3451	WASHER, GOVERNOR STOP PIN X25-12 (34199)		A	1	•	•	•	•	•	•	•	1	3	
P O	130-907-9650	FILTER 231419 (34199)		A	1	1	2	4	1	2	4	50	1	1	
GROUP 11 - PISTON AND CONNECTING ROD															
P F	2805-529-9905	RING SET, PISTON, STANDARD 230467 (34199)		A	1	1	1	2	1	1	2	25	2	1	
P F	805-562-1133	PISTON ASSEMBLY, STANDARD A230103 (34199)		A	1	•	•	•	•	•	•	5	2	2	
P F	2805-481-3528	PIN, PISTON, STANDARD 231956 (34199)		A	1	1	1	2	1	1	2	25	2	3	
P F	340-544-0698	RETAINER, PIN 230004 (34199)		A	2	1	2	4	1	2	4	50	2	4	
P F	2805-610-3002	ROD, CONNECTING B230039 (34199)		A	1	1	1	2	1	1	2	25	2	5	
P F	805-691-3025	LOCK, ROD SCREW 230525 (34199)		A	1	2	2	2	2	2	2	25	2	6	
P F	306-655-7649	BOLT, CONNECTING ROD 230526 (34199)		A	2	•	•	•	•	•	•	•	2	7	
GROUP 12 - VALVES															
P F	1805-608-0089	VALVE, EXHAUST 230027 (34199)		E		1	1	1	1	1	2	25	13	1	
P F	1805-618-1486	VALVE, INTAKE 230582 (34199)		E			1	1	1	1	2	25	13	2	
P F	1805-123-2991	GUIDE, VALVE 2300075 (34199)		E		4		1	4	3	40	13	3		
P F	1805-078-7877	INSERT, EXHAUST VALVE 2301705 (34199)		E			1	1		2	25	13	4		
P F	1805-078-3865	INSERT, INTAKE VALVE 2302655 (34199)		E			1	1		2	25	13	5		
P F	1805-527-0266	SPRING, VALVE 230168 (34199)		E			1	1		2	25	13	6		
P F	2805-507-1454	ROTATOR, VALVE 230020 (34199)		E						2	25	13	7		
P F	2805-428-3544	KEEPER, SPRING 240013 (34199)		E						2	25	13	8		
P F	2805-544-0717	TAPPET, INTAKE VALVE 230013 (34199)		E						2	25	13	9		
P F	2805-269-4692	TAPPET, EXHAUST VALVE 232777 (34199)		E						2	25	13	10		
GROUP 13 - GOVERNOR AND CONTROLS															
X20		LEVER, GOVERNOR 232614 (34199)		E									14	1	
P O	4520-608-4653	LINKAGE, GOVERNOR 230078 (34199)		E						1	11	14	2		

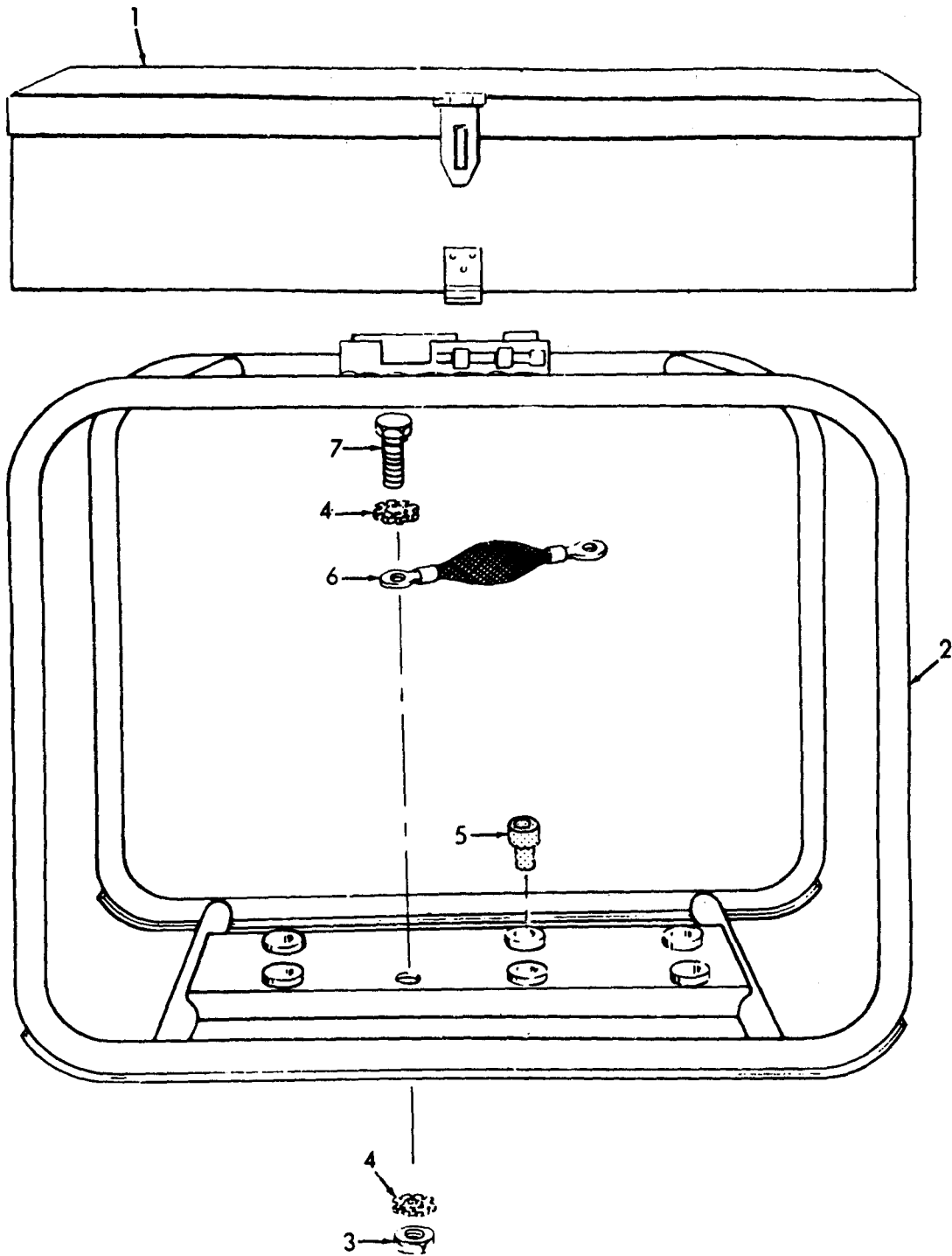
(1) SMR CODE	FEDERAL STOCK NUMBER	(3) DESCRIPTION REF NUMBER & MFR CODE	USABLE ON CODE	IT F AS	FY C I YR	(6) 0-DAY DS MAINT ALLOWANCE			(7) 0-DAY GS MAINT ALLOWANCE			(8) -YR ILW ER 00 DUPI +TGY	(9) LLUS- TRATION	
						(a)	b)	c)	a)	b)	c)		(a)	b)
						-20	-50	10X	20	-50	10		IG. IO.	EM D.
P O	305-954-8974	SCREW: SPRING MTG X67-46 (34199)		A	1	4	3
P O		WASHER, FLAT: SPRING MTG X25-48 (34199)		A	1	4	4
P O	305-209-2152	SCREW, CAP, HEXAGON HEAD: LEVER X5-7 (34199)		A	1	4	5
P O	310-012-0385	WASHER, FLAT: LEVER X25-72 (34199)		A	2	4	6
P F	990-670-4592	BUSHING: GOVERNOR 230476 (34199)		A	1	4	7
P O	990-670-4590	DISK, REGULATING 230149 (34199)		EA	1	.	1	.	.	.	10	.	4	8
X20		BRACKET: SPEED CONTROL 230477 (34199)		EA	1	4	9
P F	310-044-6207	WASHER: GEAR MTG X25-13 (34199)		EA	1	4	0
P F	805-941-6761	GEAR, GOVERNOR A235157 (34199)		EA	1	.	1	.	.	.	10	.	4	1
P F	990-659-6444	SHAFT: GOVERNOR GEAR 2301255 (34199)		EA	1	.	1	.	.	.	10	.	4	2
P F	1110-108-7936	BEARING, NEEDLE: GOVERNOR SHAFT X293-4 (34199)		EA	1	1	1	.	1	.	15	.	4	3
P F	990-607-6533	SHAFT, GOVERNOR CROSS ASSEMBLY A230540 (34199)		EA	1	.	1	.	.	.	10	.	4	4
P F	310-595-5574	WASHER: GOVERNOR SHAFT X25-58 (34199)		EA	1	4	5
P O	310-584-5005	NUT, PLAIN, HEXAGON: LEVER SCREW X81-1 (34199)		EA		14	6
P O	3340-012-0525	SPRING, GOVERNOR 232617 (34199)		EA		1	.	1	1	1	25	.	14	7
		GROUP 14 - CAMSHAFT												
P F	5340-680-1584	SPACER: CAMSHAFT 230293 (34199)		EA		.	.	.	1	.	25	.	15	1
P F	2805-997-4465	CAMSHAFT ASSEMBLY A232776 (34199)		EA		5	.	15	2
P F		SPRING ACTUATING 232770 (34199)		EA		.	.	.	1	.	25	.	15	3
P F	5315-594-9501	PIN, CAMSHAFT 230053 (34199)		EA		.	.	.	1	.	25	.	15	4
P F	5340-680-1583	SPACER, CAMSHAFT 230294 (34199)		EA		.	.	.	1	.	25	.	15	5
		GROUP 15- COMPRESSOR AND DRIVE COUPLING												
P O	4310-125-6330	COUPLING, FLEXIBLE: COMPRESSOR MTG CF870003 (82254)		E		16	1
X20		FLANGE, MOUNTING CFD70079 (82254)		E		16	2
X20		TUBE: DEFLECTOR PLATE MTG CFA70117 (82254)		E		16	3
P O	5310-167-0721	WASHER, LOCK: FLANGE TO ENGINE AND COMPRESSOR G138538 (24617)		E		16	4

(1) SMR CODE	(2) FEDERAL STOCK NUMBER	(3) DESCRIPTION USABLI ON CODE	(4) INI OF IEA	(5) 271 NC INI	(6) 30-DAY DS MAINT ALLOWANCE			(7) 30-DAY GS MAIN ALLOWANCE			(8) 1-YR ALW PER 100 EQUIP CNTG'	(9) ILLUS- TRATION	
					(a) 1-1	(b) 21-5	(c) 1-10	(a) 1-21	(b) 21-51	(c) 51-1		(a) FIG NO	(b) TEN NO.
P O	5306-207-8373	BOLT, MACHINE: FLANGE TO ENGINE G1 42271 (24617)	E								16	5	
P O	5306-576-0529	SCREW, CAP, HEXAGON HEAD: FLANGE TO COMPRESSOR G122033 (24617)	E								16	6	
P O I	4310-132-1541	COMPRESSOR CFR7002 (8255A)	E							5	16	7	
P O	5306-655-3170	BOLT: COMPRESSOR MTG G122040 (24617)	E								16	8	
P O	5310-167-0721	WASHER, LOCK: COMPRESSOR MTG G1 38538 (24617)	E								16	9	
P O	5305-269-3219	BOLT: FLANGE TO ENGINE G122201 (24617)	E								16	10	
P O	5305-124-5898	SETScrew: COUPLING TO COMPRESSOR G191950 (24617)	E								16	11	
P O	5315-362-0212	KEY, SQUARE: COUPLING CFA70114 (82254)	E	1							16	12	
GROUP 16 . AIR DISCHARGE SYSTEM													
P O	1820-125-6329	VALVE, RELIEF FIG48 (34494)	E	1	1	2	1	1		25	7	1	
I20		TEE, PIPE: RELIEF VALVE G444122 (24617)	A	E	1	*	*	*	*		7	2	
P O	1730-718-2654	NIPPLE, PIPE: ELBOW TO COMPRESSOR G443990 (24617)	E	1	*	*	*	*			7	3	
P O	5310-582-5965	WASHER, LOCK: MANIFOLD MTG G121753 (24617)	A	E	2	*	*	*	*		7	4	
P O	5305-720-8154	SCREW, MACHINE: MANIFOLD CLAMP G122047 (24617)	A	E	2	*	*	*	*		7	5	
P O	5685-236-3976	GAGE, PRESSURE CFA70007 (8225A)	E	1	*	1	*	*		10	7	6	
I20		CLAMP: MANIFOLD MTG CFB70103 (8225A)	A	E	2						7	7	
I20		MANIFOLD CFD70129 (8225A)	A	E	1						7	8	
P O	1730-249-1476	ELBOW: RELIEF VALVE G119097 (24617)	B	E	1	*	*	*	*		7	9	
I20		MANIFOLD CFD70129 (8225A)	A	E	1						7	0	
P O	5310-655-5789	WASHER, LOCK: MANIFOLD MTG G: 38538 (24617)	A	E	2	*	*	*	*		7	1	
P O	5306-637-9674	BOLT: MANIFOLD MTG G122027 (24617)	A	E	2	*	*	*	*		7	2	
P O	5305-145-6814	SCREW, MACHINE: CONNECTOR MTG G121966 (24617)	A	E	4	*	*	*	*		7	3	
P O	5310-818-3041	WASHER, LOCK: CONNECTOR MTG	A	E	4	*	*	*	*		7	4	
I20		CONNECTOR: MANIFOLD MTG G1 18752 (24617)	A	E	2						7	5	
P O	1730-489-8252	COUPLER, QUICK DISCONNECT 3103 (14127)	E	10	1	2	1	1		25	7	6	
P O	1730-277-9174	ELBOW: LINE CYLINDER HEAD G1 18757 (24617)	E	2	*	*	*	*			7	7	

(1) SMR CODE	(2) FEDERAL STOCK NUMBER	DESCRIPTION	USABLE ON CODE	(3) QUANTITY	(4) UNIT	(6) >DAY DS MAINT ALLOWANCE			(7) 0-DAY GS MAIN ALLOWANCE			(8) -YR ILLW PER 100 EQUIP MTGTY	(9) ILLUS- TRATION	
						a)	b)	c)	a)	b)	c)		a)	b)
						20	10	10	20	50	1		7	8
MFO		LINE ASSEMBLY: OUTLET VALVE TO MANIFOLD CFB70014 (82254) MANUFACTURE FROM:		EA	1								7	8
O	4710-277-5522	TUBE, COPPER: 1 1/4 IN. REQUIRED												
O	4730-012-0141	NUT, TUBE COUPLING: 2 EA												
O	4730-270-4607	CONNECTOR: LINE TO MANIFOLD G118752 (24617)		EA	2			*	*	*		*	7	9
O	4820-410-1925	OCK, DRAIN: MANIFOLD MS35785-7 (96906)		EA	1			*	*	*		*	7	0
20		LATE, INSTRUCTION MOUNTING CFD70152 (82254)	B	EA	1								7	1
20		LATE, INSTRUCTION MOUNTING CFC70004 (82254)	A	EA	1								7	22
MFO		LINE ASSEMBLY CFB70108 (82254) MANUFACTURE FROM:		EA	1									
O	4710-277-5522	TUBE, COPPER												
O	4730-012-0141	NUT, TUBE COUPLING: 2 EA												
		GROUP 17 - COMPRESSOR COOLING												
120		SHROUD CFR70076 (82254)		EA	1								18	1
O	5306-720-8258	OLT: SHROUD MTG G122089 (24617)		EA	2			*	*	*		*	18	2
O	5310-655-5789	ASHER, LOCK: SHROUD MTG G138538 (24617)		EA	2			*	*	*		*	18	3
120		SHROUD CFR70075 (82254)		EA	1								18	4
O	5310-582-5965	ASHER, LOCK: SHROUD MTG G121753 (24617)		EA	2			*	*	*		*	18	5
O	5305-068-0502	CREW, CAP, HEXAGON HEAD: SHROUD MTG G121887 (24617)		EA	2			*	*	*		*	18	6
O	5305-724-5903	ETS CREW: BLOWER WHEEL G102582 (24617)		EA	1			*	*	*		*	18	7
O		WHEEL, BLOWER R700-2255 (95933)		EA	1			1	*	*		10	18	8
O	5305-269-2808	OLT: BLOWER MTG MS90726-65 (96906)		EA	1			*	*	*		*	18	9
120		SCREEN: SHROUD CFA70088 (82254)		EA	1								18	10
120		RETAINER: SCREEN CFC70089 (82254)		EA	1								18	11
O	5310-413-5375	ASHER, LOCK: RETAINER MTG G121861 (24617)		EA	2			*	*	*		*	18	12
O	5305-050-9227	CREW, MACHINE: RETAINER MTG G155103 (24617)		EA	1			*	*	*		*	18	13
O	5310-167-0721	ASHER, LOCK: SHROUD MTG G138538 (24617)		EA	2			*	*	*		*	18	14
O	5306-754-4285	CREW, CAP, HEXAGON HEAD: SHROUD MTG G138227 (24617)		EA	2			*	*	*		*	18	15
120		SHROUD: COMPRESSOR BOTTOM CFD70077 (82254)		EA	1								18	16

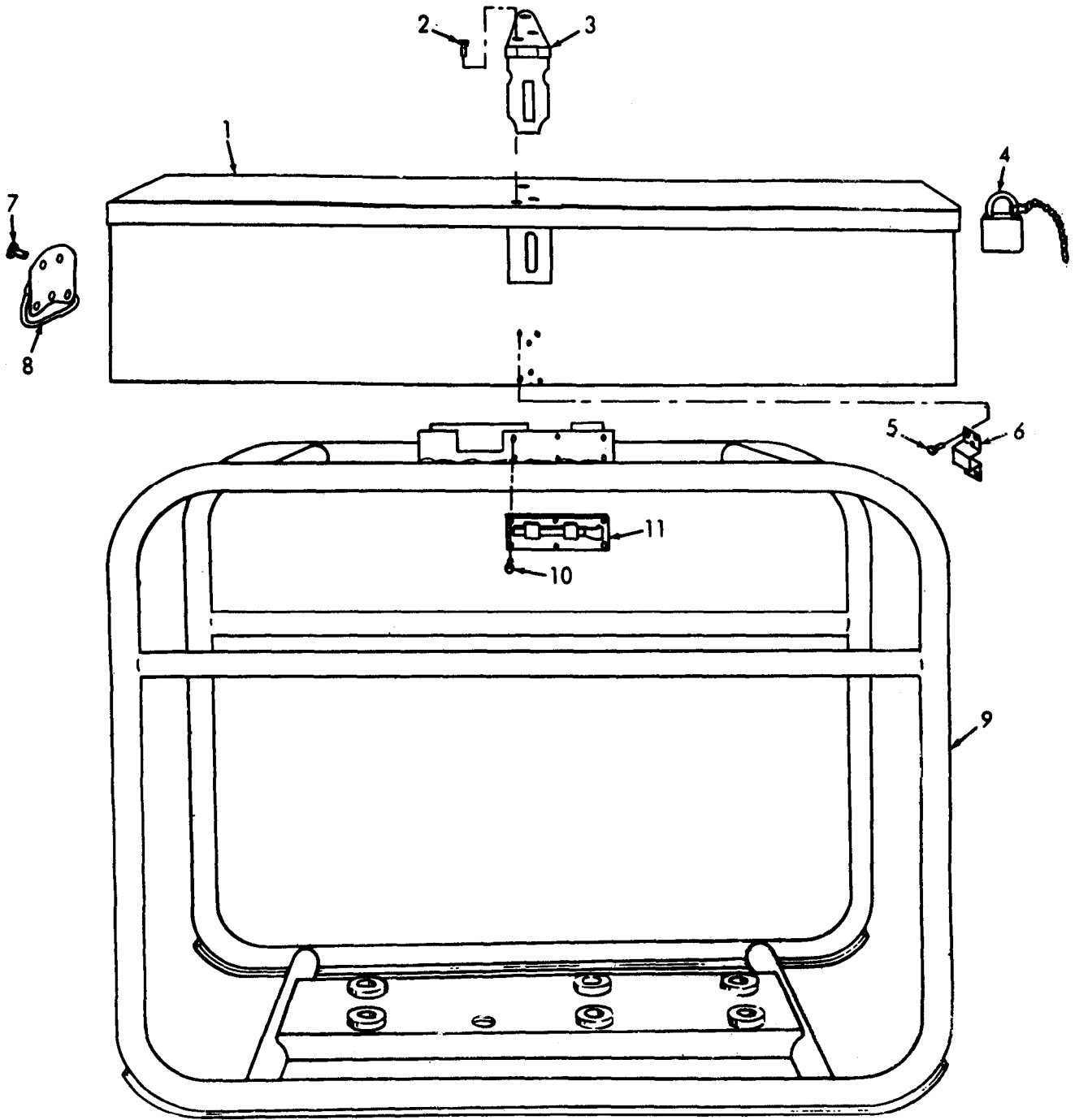
(1) SM CDI	(2) FEDERAL STOCK NUMBER	(3) DESCRIPTION USABL ON CODI	(4) UNIT OF MEAS	(5) QTY INC IN UNIT	(6) 30-DAY DS MAIN ALLOWANCE			(7) 30-DAY GS MA ALLOWANCE			(8) 1-YRR ALW PER 100 EQUIP CNTGY	(9) ILLUS- TRATIC		
					1-	2	SI-	1-	2	SI		P	T	
														(c)
		GROUP 18 COMPRESSOR CYLINDER HEAD												
0		HEAD ASSEMBLY CFC70100 (82254)	EA								1			
0	5305-576-2514	SCREW, MACHINE: INTAKE VALVE G154976 (24617)	EA								1			
0	1310-906-7916	INTAKE VALVE CFA70095 (82254)	EA	2						60	1	2		
0	1310-132-1544	HEAD CFD70074 (82254)	EA	2						5	1			
X20		TUBE: AIR INTAKE CFA70091 (82254)	EA								1	2		
D	2974-496-4174	FILTER, AIR INTAKE OHJ (00736)	EA							11	1	5		
		RETAINER, CHECK VALVE CFC70041 (82254)	EA							11	1	6		
	820-127-0216	VALVE, CHECK CFB70096 (82254)	EA							11	1	7		
	305-208-7182	SCREW, MACHINE: GUIDE MTG G153421 (24617)	EA							15		8		
		GUIDE CFB70122 (82254)	EA							15		9		
		SPRING CFA70118 (82254)	EA							15				
		DISK CFA70120 (82254)	EA							19				
		BODY CFC70123 (82254)	EA							19				
	105-058-3715	SCREW: CYLINDER HEAD MTG G9421707 (24617)	EA	2							19			
	110-655-5709	ASHER, LOCK: CYLINDER HEAD MTG G138538 (24617)	EA	2							19			
	30-436-7220	ASKET: VALVE CFA70124 (82254)	EA	1						11		9		
X2		SHIM: CYLINDER HEAD, .016 IN. THK CFA70137-1 (82254)	EA	2								9		
X20		SHIM: CYLINDER HEAD, .025 IN. THK CFA70137-2 (82254)	EA	2								9		
X20		SHIM: CYLINDER HEAD, .032 IN. THK CFA70137-3 (82254)	EA	2								9		
		GROUP 19 - COMPRESSOR HOUSING, PISTON AND SHAFT												
2F		HOUSING, BEARING CFC70112 (82254)	EA	1								0		
2F		HOUSING, COMPRESSOR CFR70082 (82254)	EA	1								20		
F		SHAFT ASSEMBLY: COMPRESSOR CFC70101 (82254)	EA	1								0		
F	0-277-0420	BEARING: SHAFT Z996606X1E (43334)	EA	2		*	*	1	*	*	1	35	4	
F		RING, RETAINING: BEARING 5102-1562F (79136)	EA	2		*	*	*	*	*	*	5	20	5
F	0-277-0322	BEARING: SHAFT Z996608X1E (79136)	EA	2		*	*	1	*	*	1	10	20	6

(1) MR ODE	FEDERAL STOCK NUMBER	DESCRIPTION REF NUMBER & MFR CODE	USABLE ON CODE	UNIT	CY C # UNIT	(6) 1-DAY DS MAINT ALLOWANCE			(7) 0-DAY GS ALLOWANCE			NT C	(8) YR LW ER % UIP TGY	(9) ILLU- STRATION	
						a)	b)	c)	a)	b)	c)			(a)	(b)
						20	50	100	20	50	100			IG. D.	EM IO.
F	310-906-7919	SHAFT CFD70084 (82254)		EA	1		*	1	*	*		10)	7	
O		COUNTERBALANCE: COMPRESSOR DRIVE CFB70107 (82254)		EA	1)	8	
O	305-124-5898	SETScrew: COUNTERBALANCE G191950 (24617)		EA	1		*	*	*	*		*)	9	
O	306-543-4405	BOLT, MACHINE: BEARING HOUSING MTG G122017 (24617)		EA	4		*	*	*	*		*)	0	
O	310-167-0721	WASHER, LOCK: BEARING HOUSING MTG G138538 (24617)		EA	4		*	*	*	*		*)	1	
X2F		HOUSING, BEARING CFC70111 (82254)		EA	1)	2	
F	310-906-7918	PISTON CFD70078 (82254)		EA	2		1	2	1	1		25	20	3	
O	310-906-7915	DIAPHRAGM CFC70083 (82254)		EA	2		3	5	1	3		60)	4	
O		PLATE, BACKUP CFB70090 (82254)		EA	2)	5	
O	305-939-9189	CREW, MACHINE: BACKUP PLATE MTG G155941 (24617)		EA	16		*	*	*	*		*)	6	
F	306-822-8199	BOLT, MACHINE: PISTON MTG G122077 (24617)		EA	4		*	*	*	*		*	20	7	
F	310-167-0721	WASHER, LOCK: PISTON MTG G138538 (24617)		EA	4		*	*	*	*		*	D	18	
F	310-753-4153	NUT, PLAIN, HEXAGON: PISTON MTG G120376 (24617)		EA	4		*	*	*	*		*	D	19	
		GROUP 20- REPAIRKITS													
O	305-507-1466	GASKET SET: ENGINE OVERHAUL 230165 (34199)		EA	1		*	*	*	*		10			
		1-GASKET											6	3	
		1-GASKET											7	6	
		1-GASKET											8	12	
		1-GASKET											0	21	
		1-GASKET											1	5	
		1-GASKET											1	14	
		1-GASKET											1	16	
		1-GASKET											1	22	
		1-GASKET											1	37	
O	310-075-0397	KIT, REPAIR: CARBURETOR 231555 (34199)		EA	1							10			
		1-GASKET											8	3	
		1-GASKET											8	5	
		1-GASKET											8	6	
		1-PIN											8	7	
		1-NEEDLE											8	9	
		1-SEAT											8	10	
		1-GASKET											8	11	



ME 4230-203-24P/1

Figure 1. Box and Frame



ME 4230-20 3-24P/2

Figure 2. Box and Frame

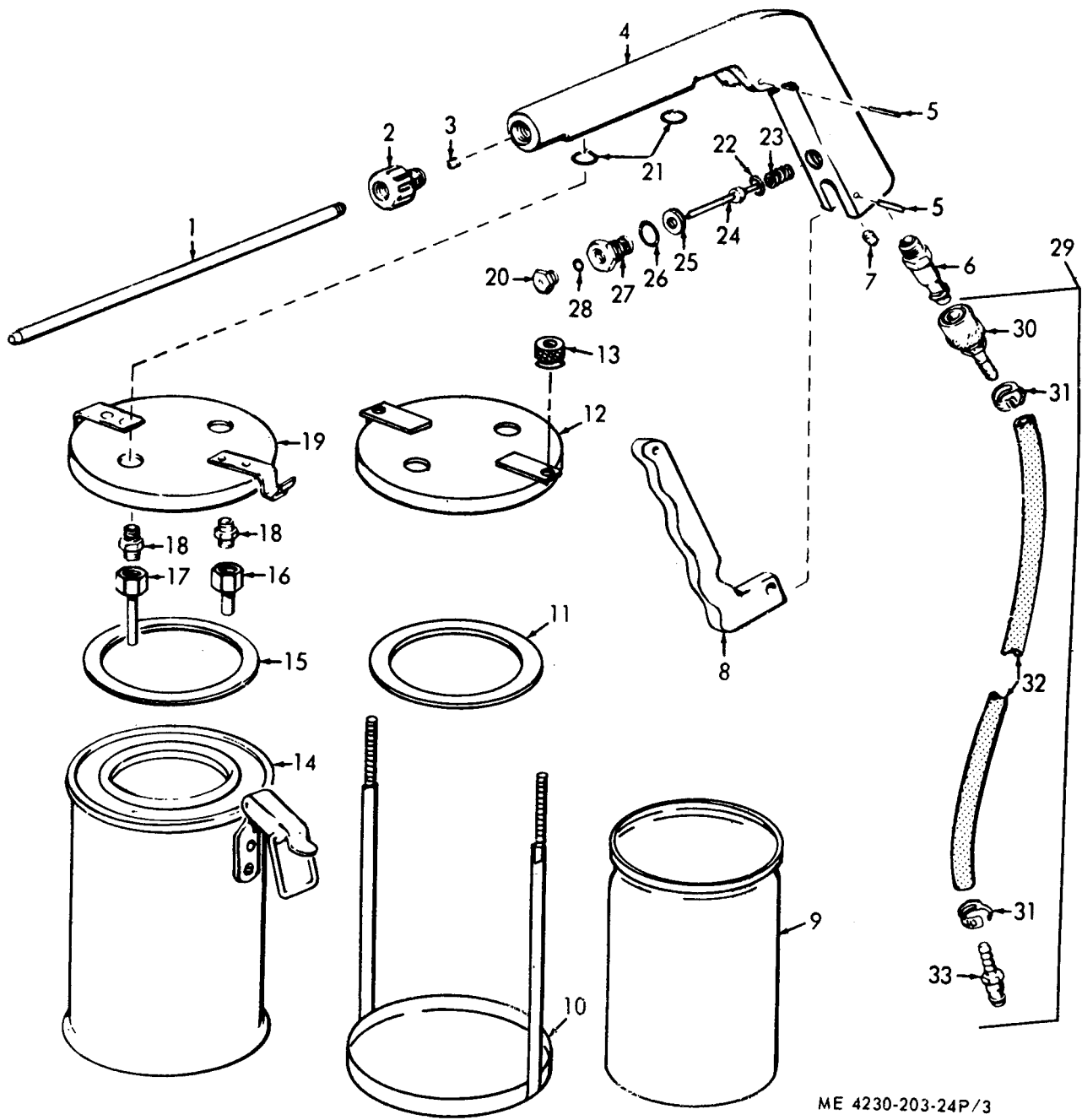
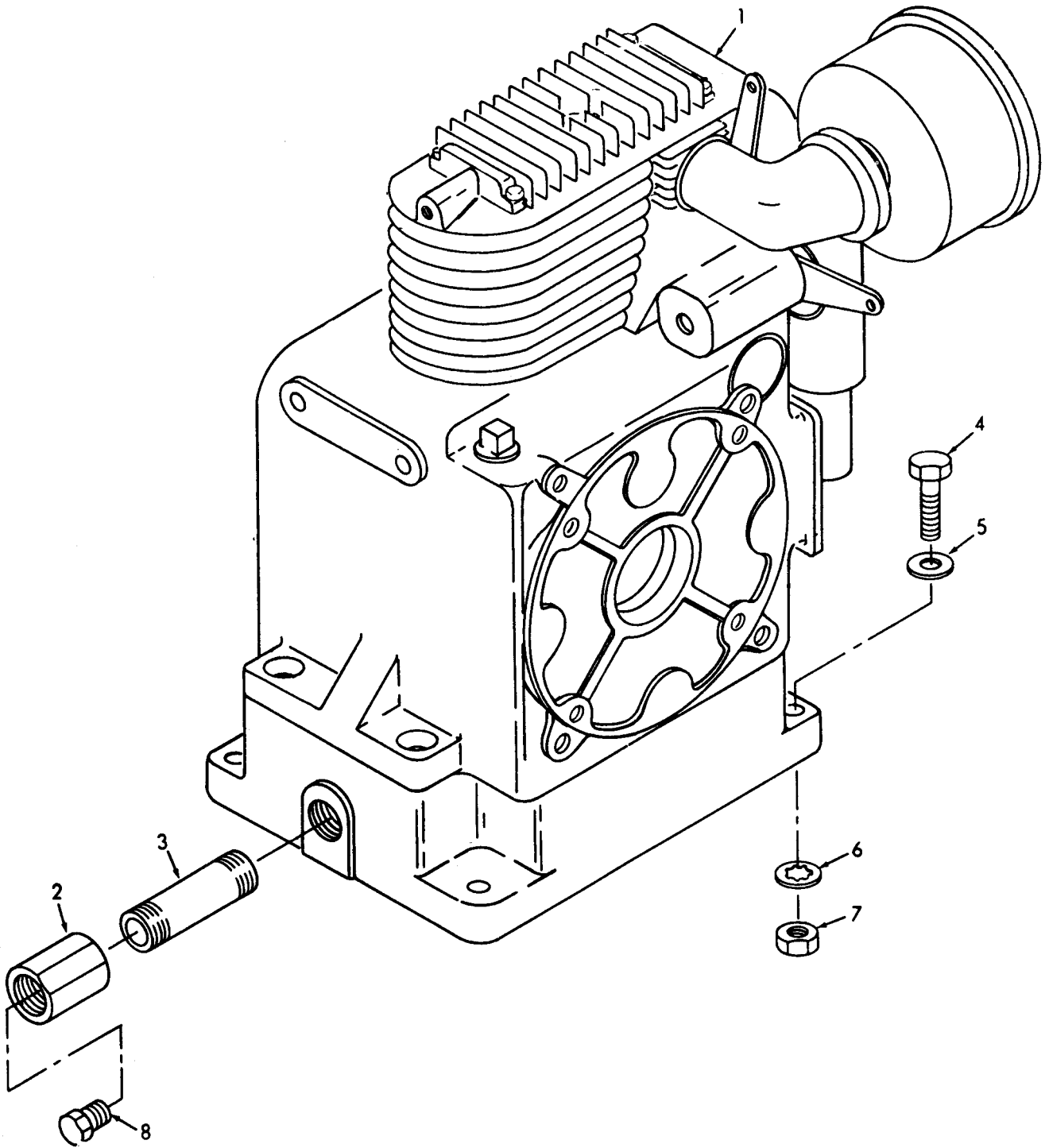
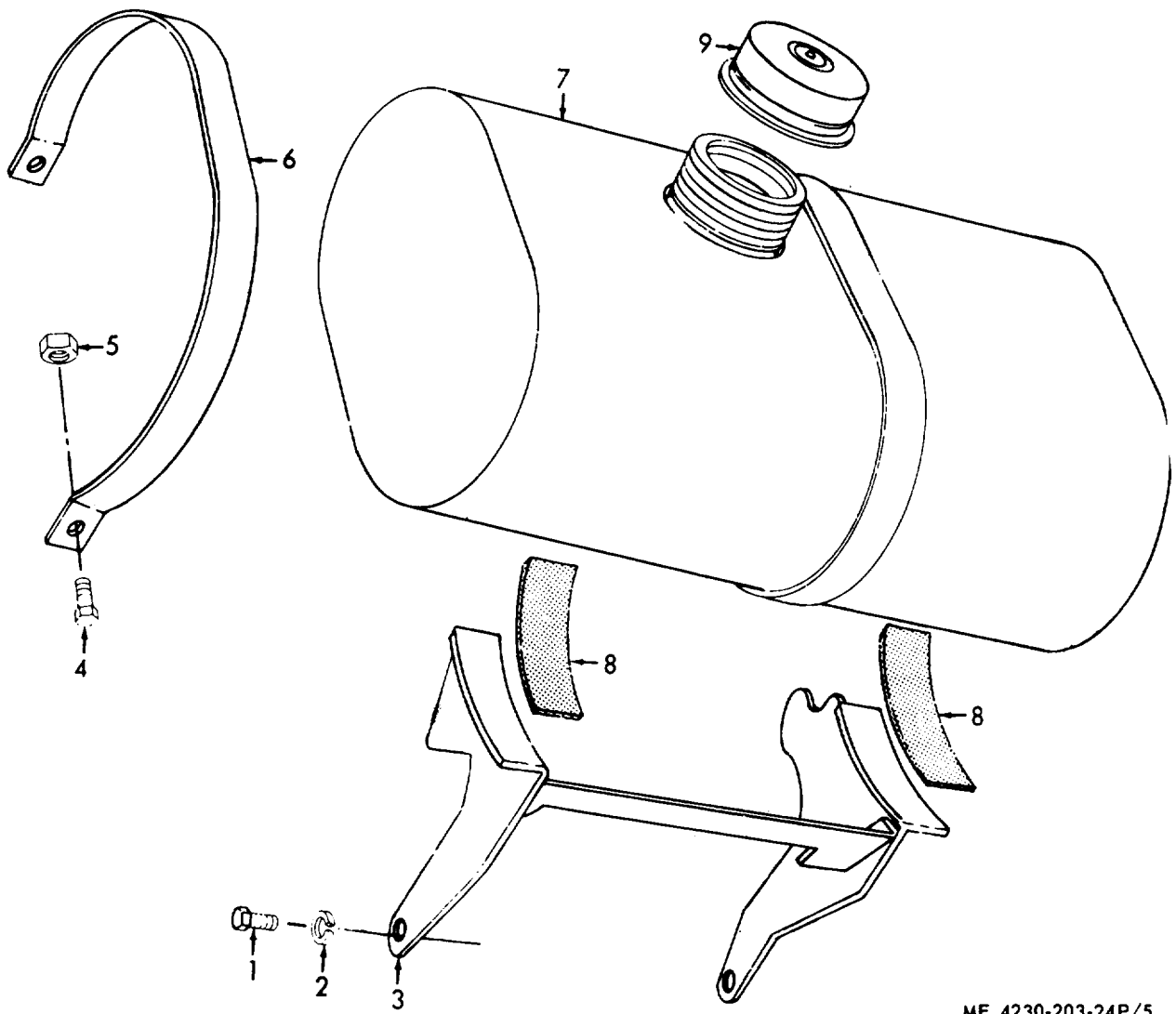


Figure 3. Gun, Dusting



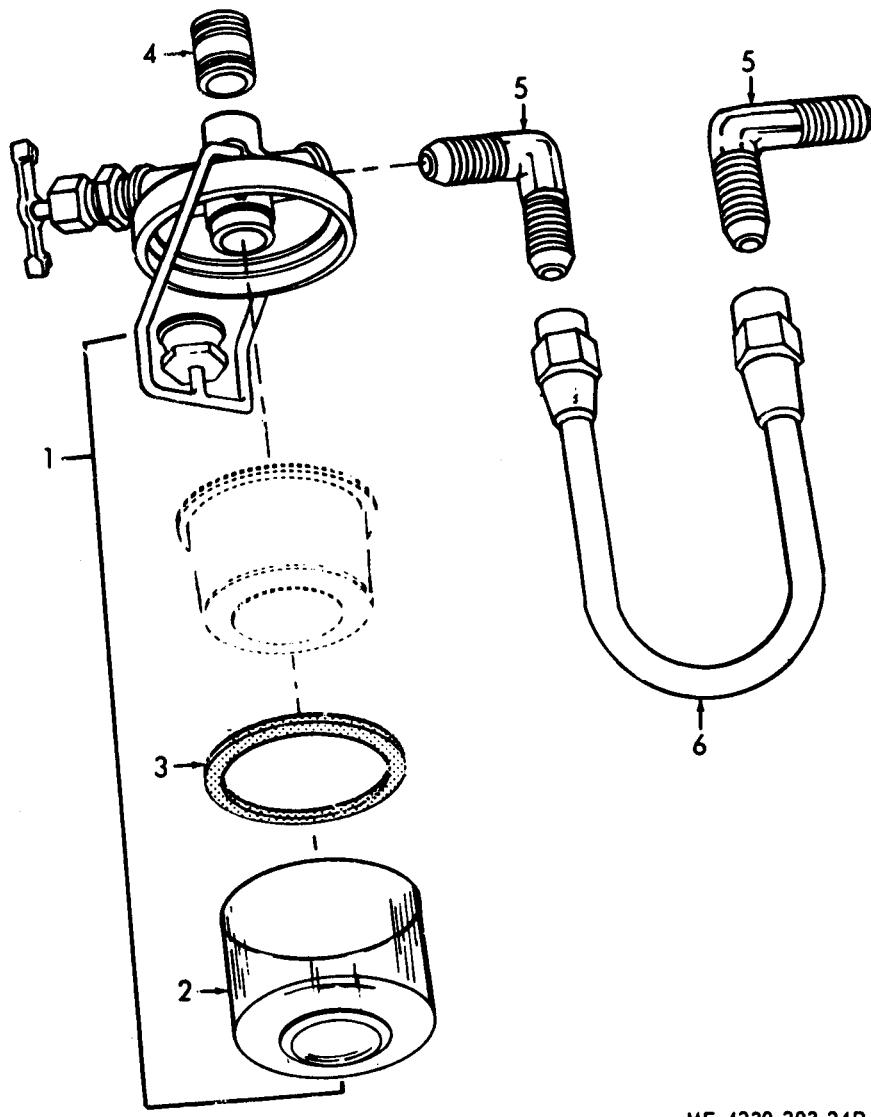
ME 4230-203-24P/4

Figure 4. Engine, Gasoline

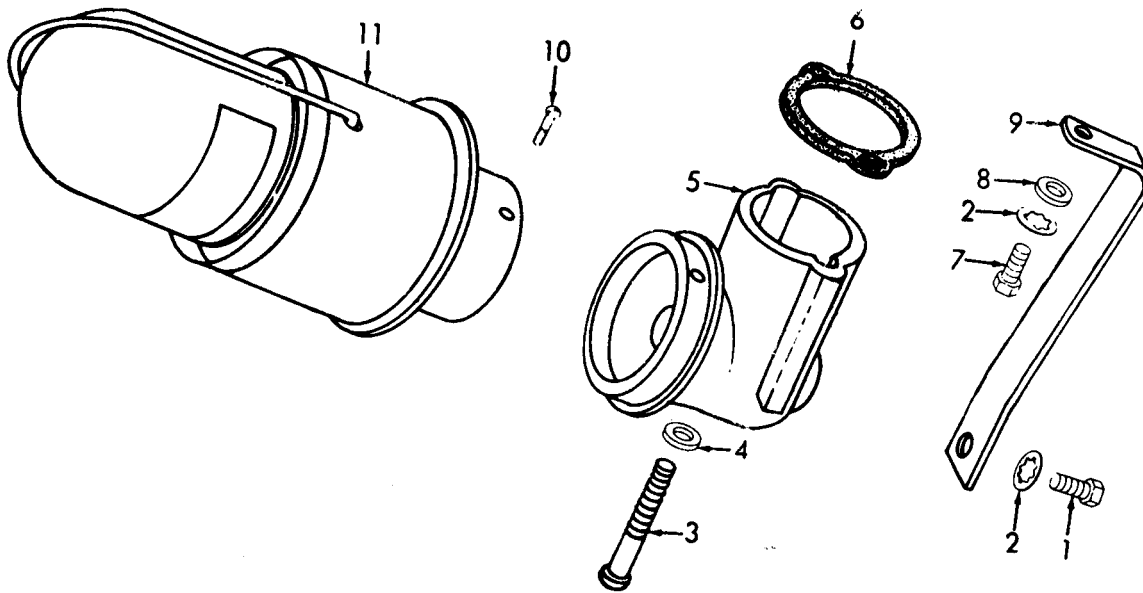


ME 4230-203-24P/5

Figure 5. Fuel Tank and Bracket

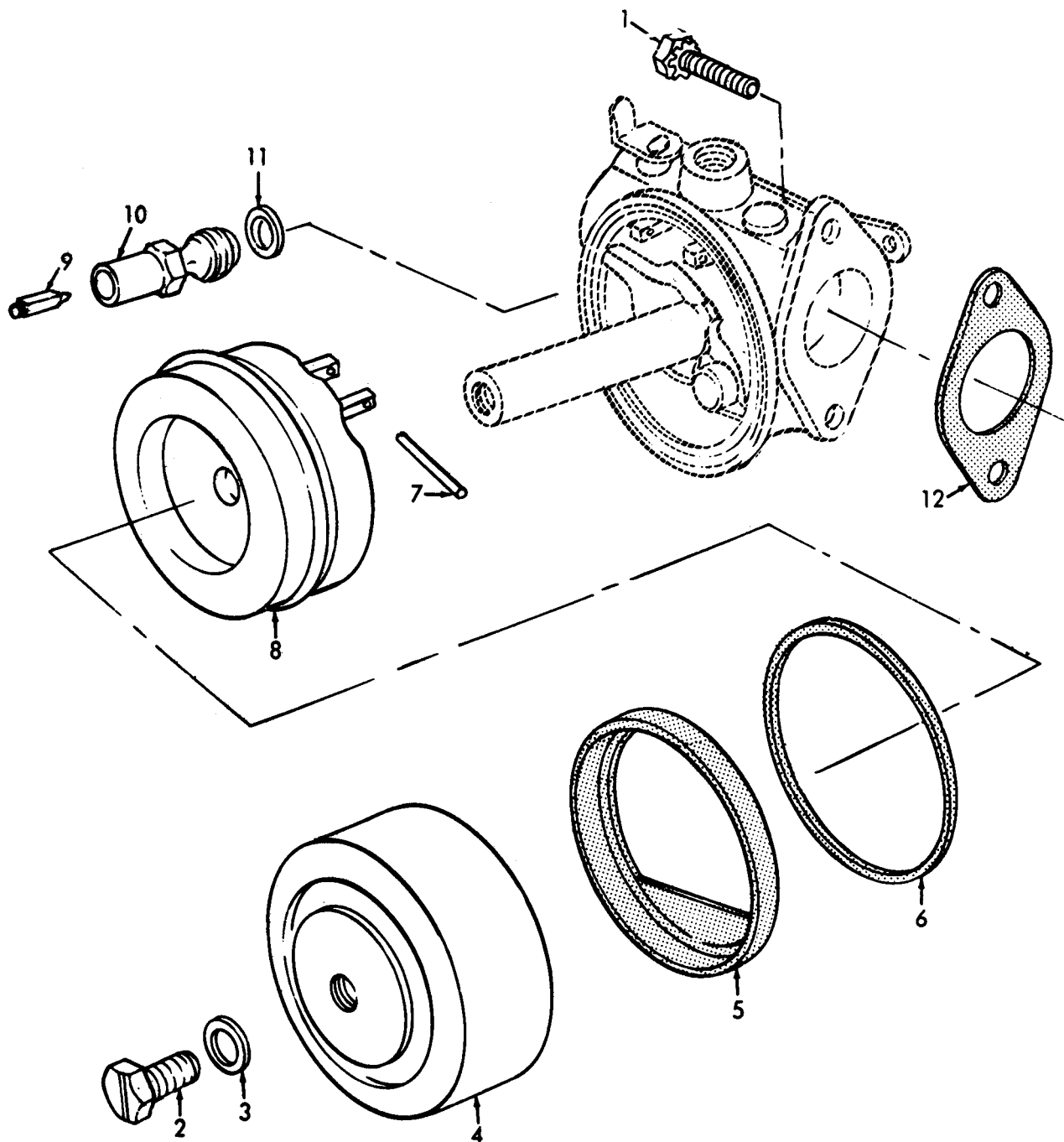


ME 4230-203-24P/6



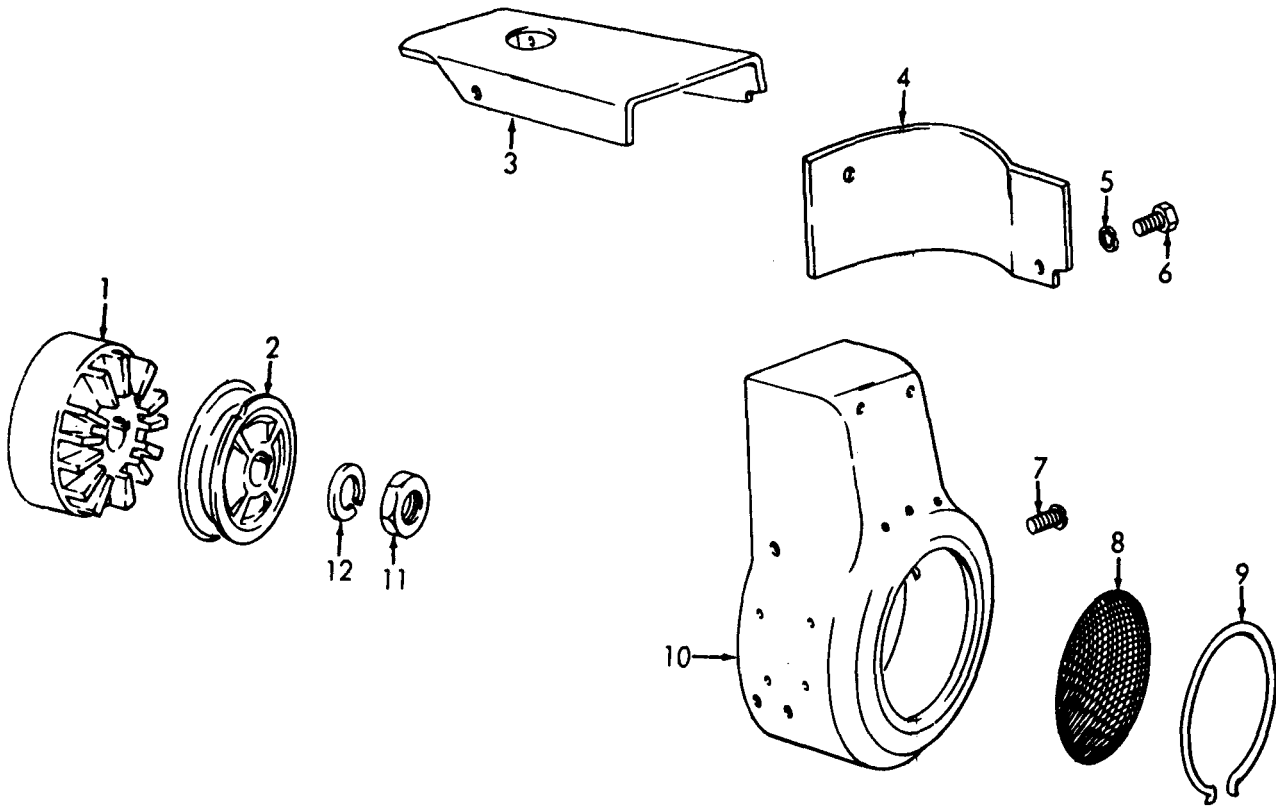
ME 4230-203-24P/7

Figure 7. Air Cleaner



ME 4230-203-24P/8

Figure 8. Carburetor



ME 4230-203-24P/9

Figure 9. Flywheel, Blower Housing and Baffles

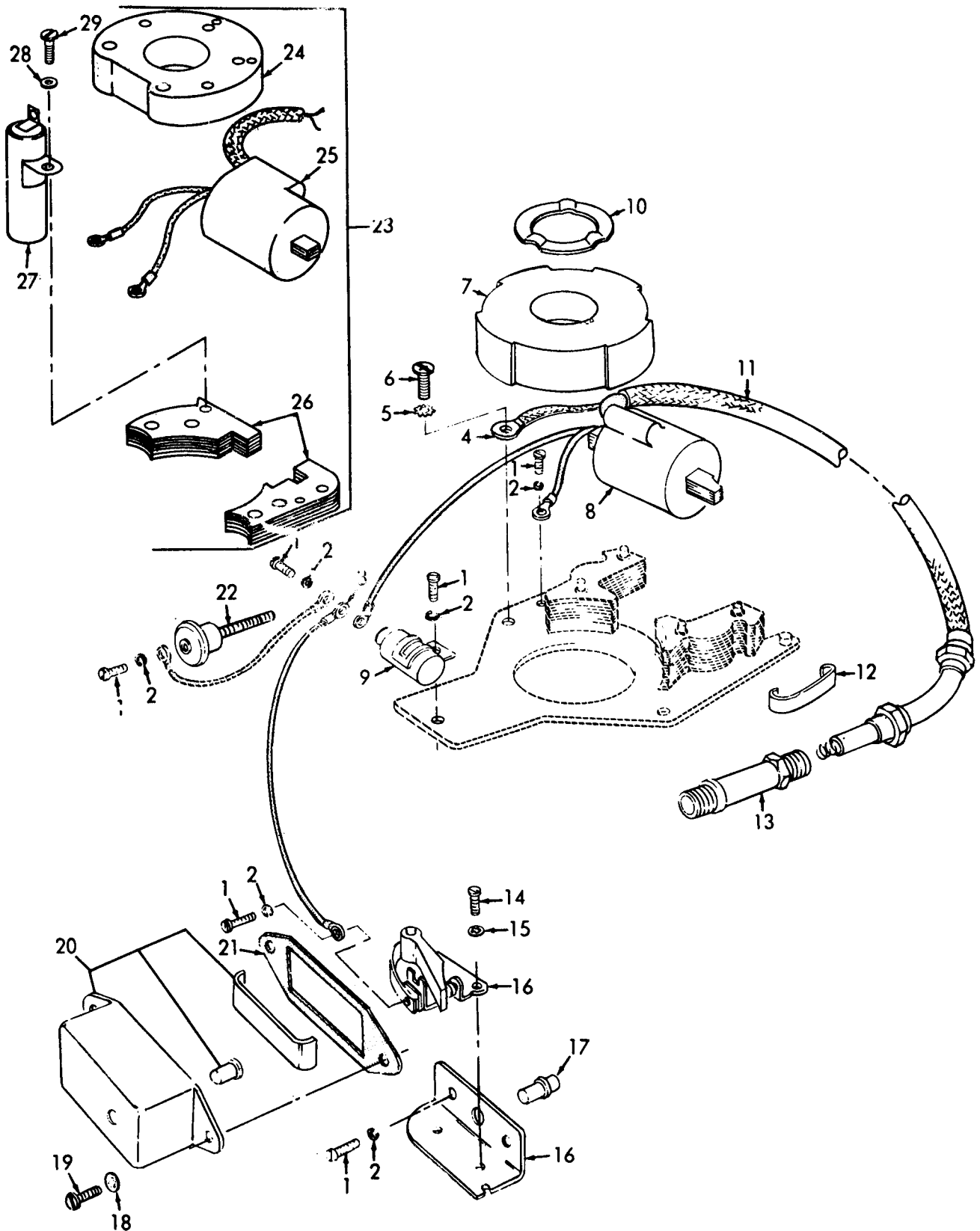
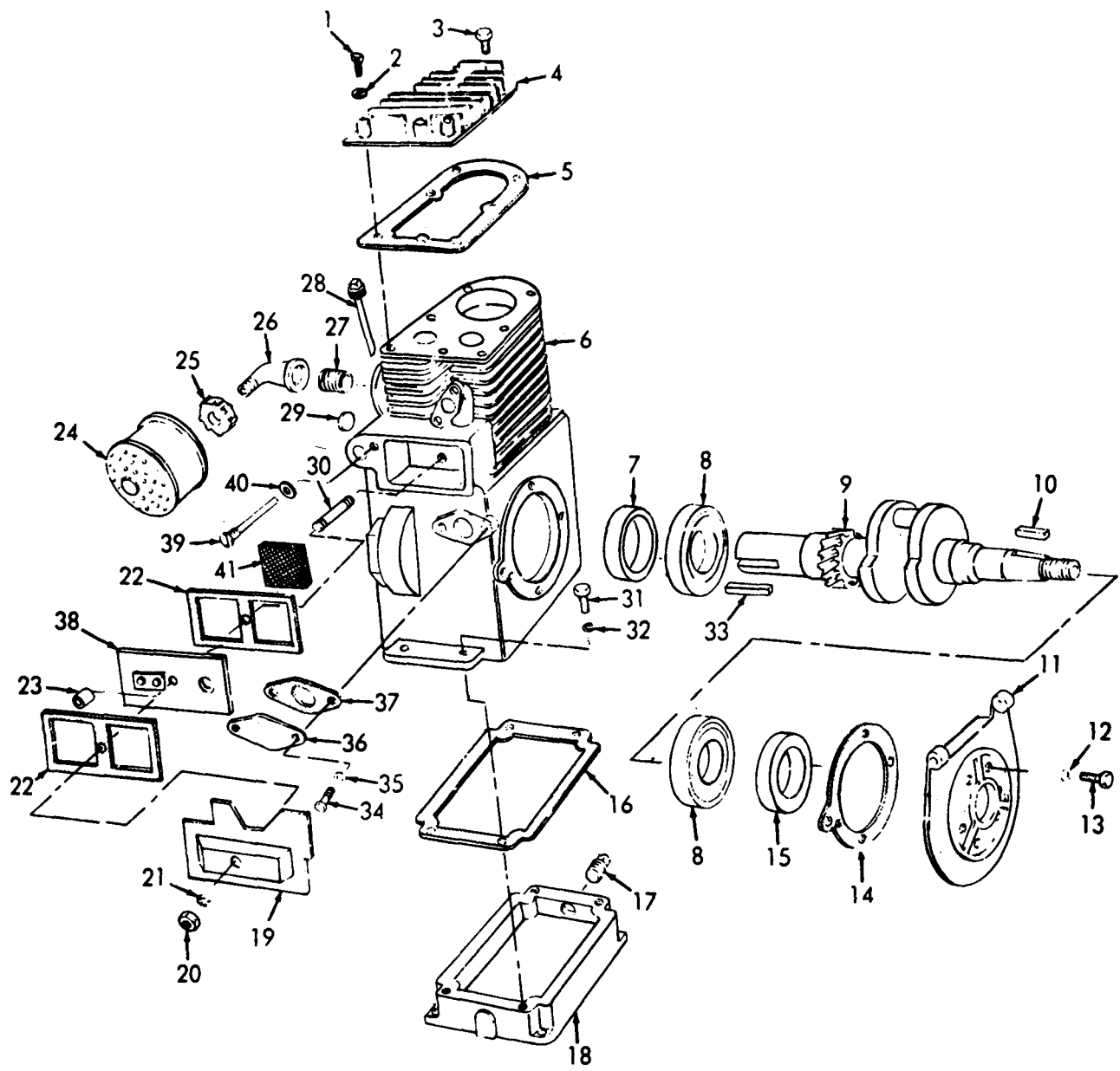


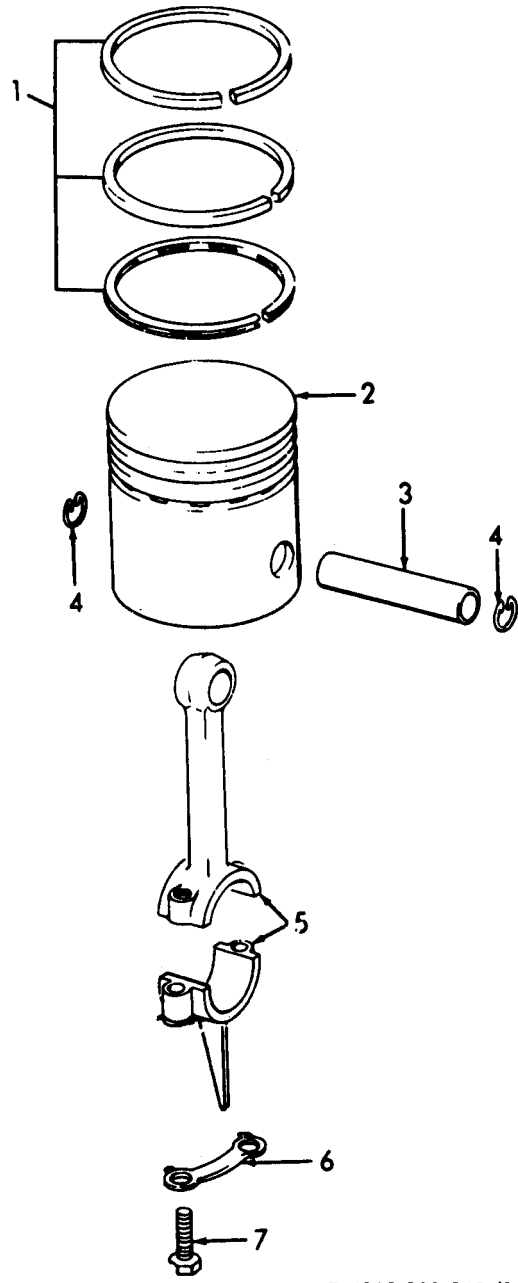
Figure 10. Ignition Components

ME 4230-203-24P/10



ME 4230-203-24P/11

Figure 11. Engine Block, Cylinder Head, Crankshaft, Oil Pan



ME 4230-203-24P/12

Figure 12. Piston and Connecting Rod

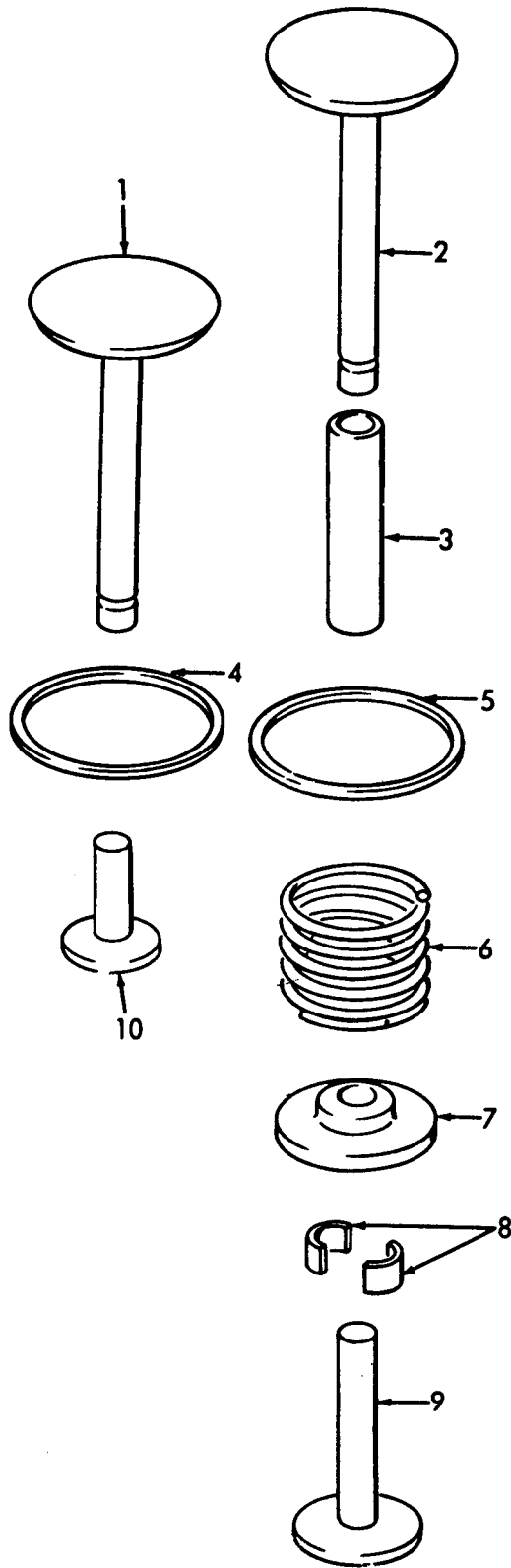
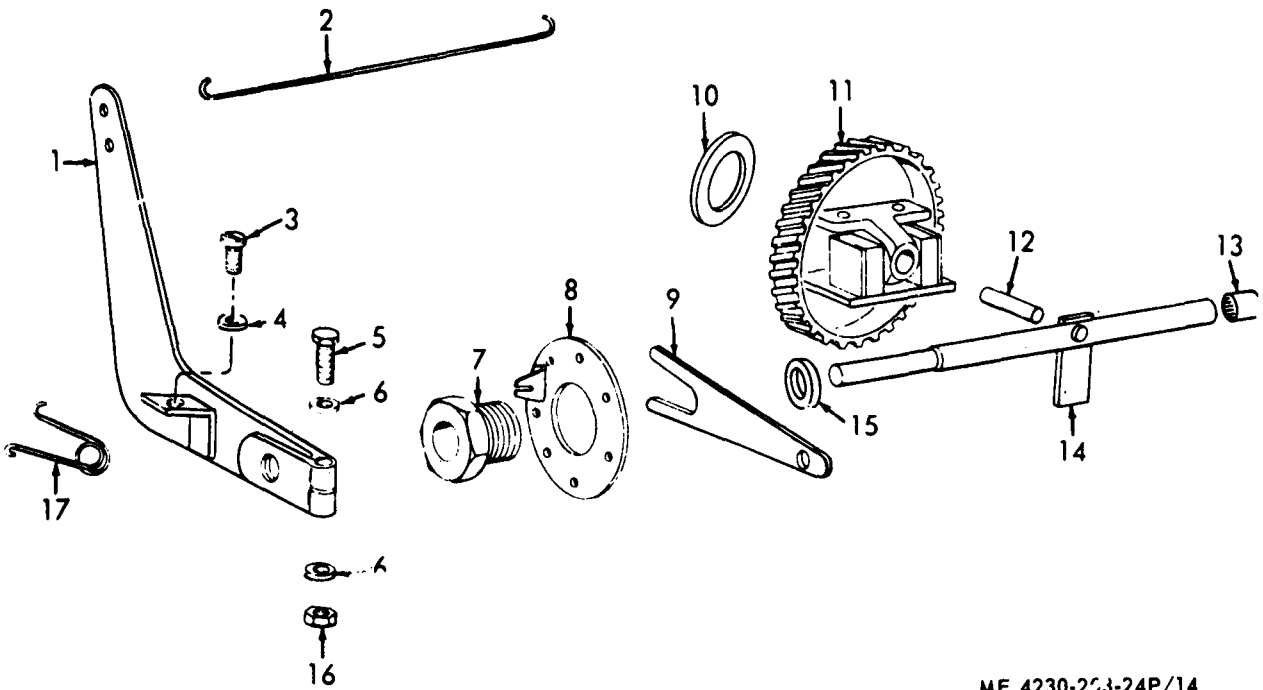
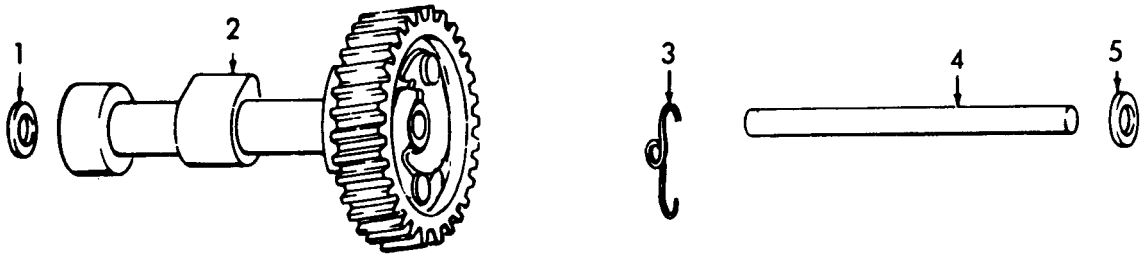


Figure 13. Valves



ME 4230-253-24P/14.

Figure 14. Governor and Controls



ME 4230-203-24P/15

Figure 15. Camshaft

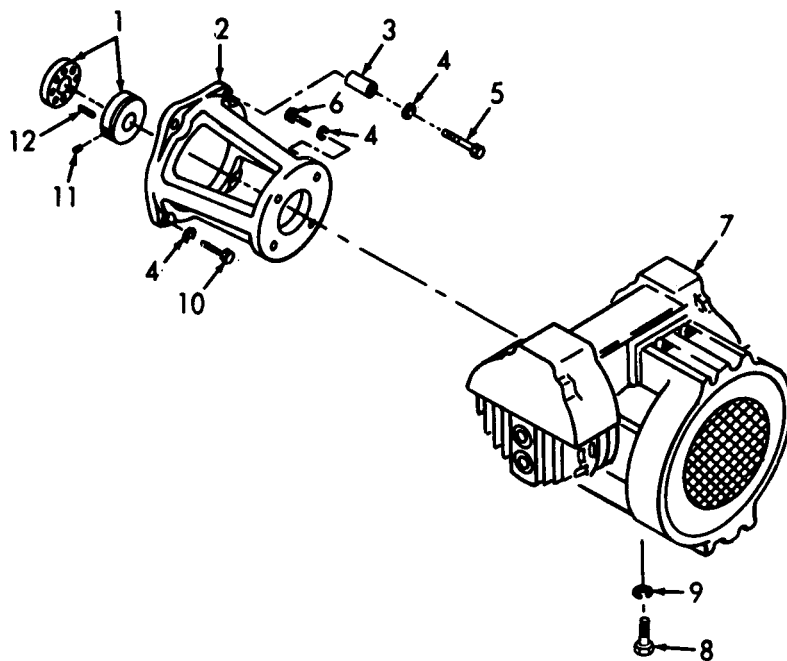
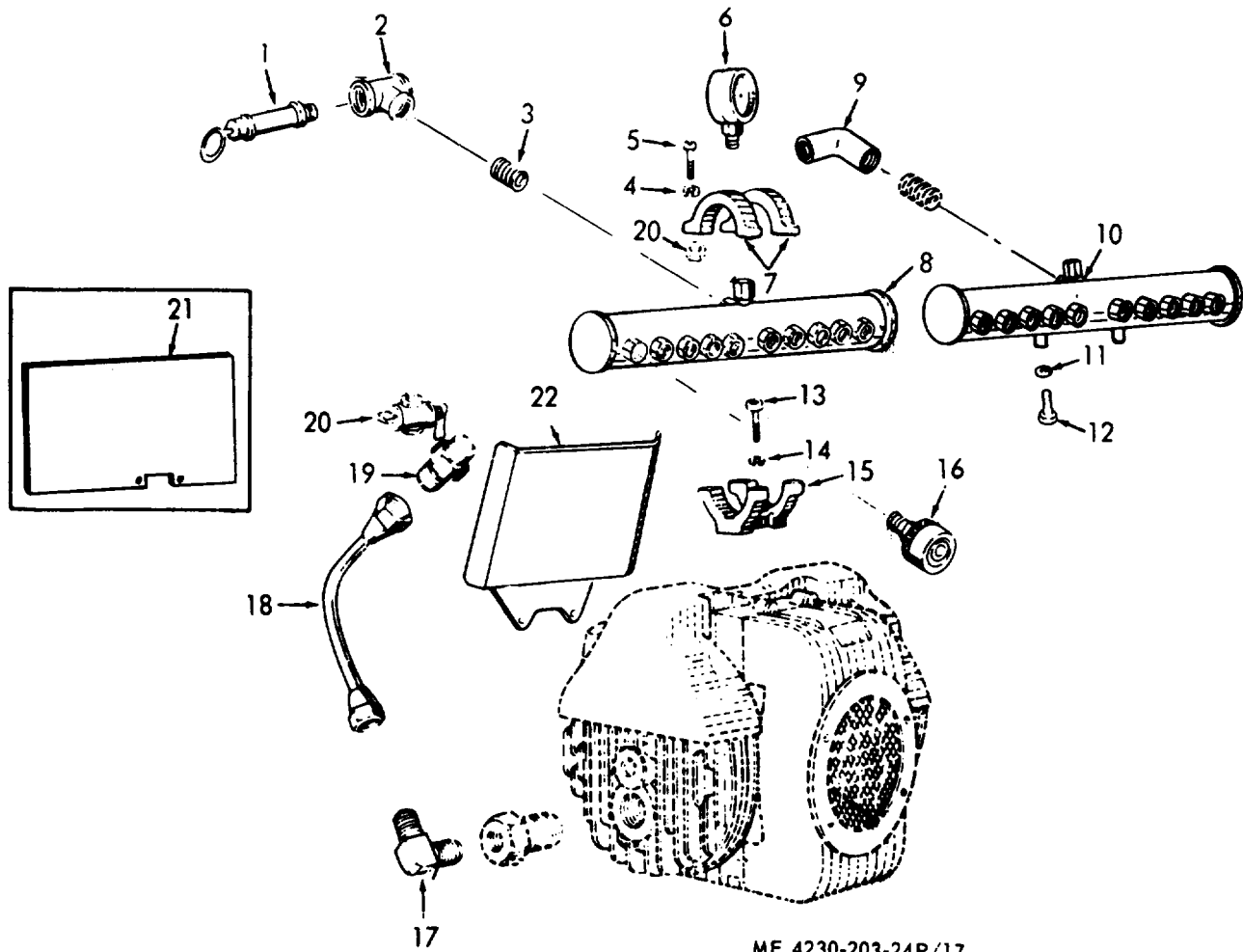


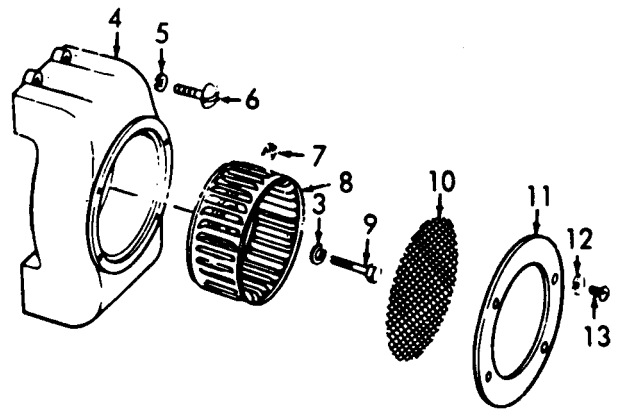
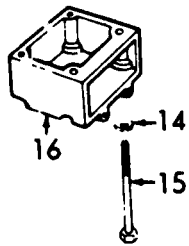
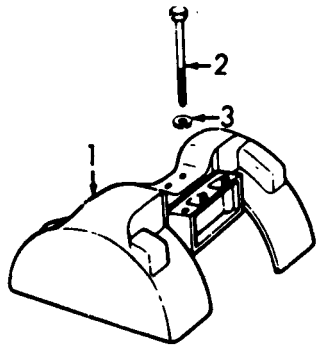
Figure 16. Compressor and Drive Coupling



ME 4230-203-24P/17

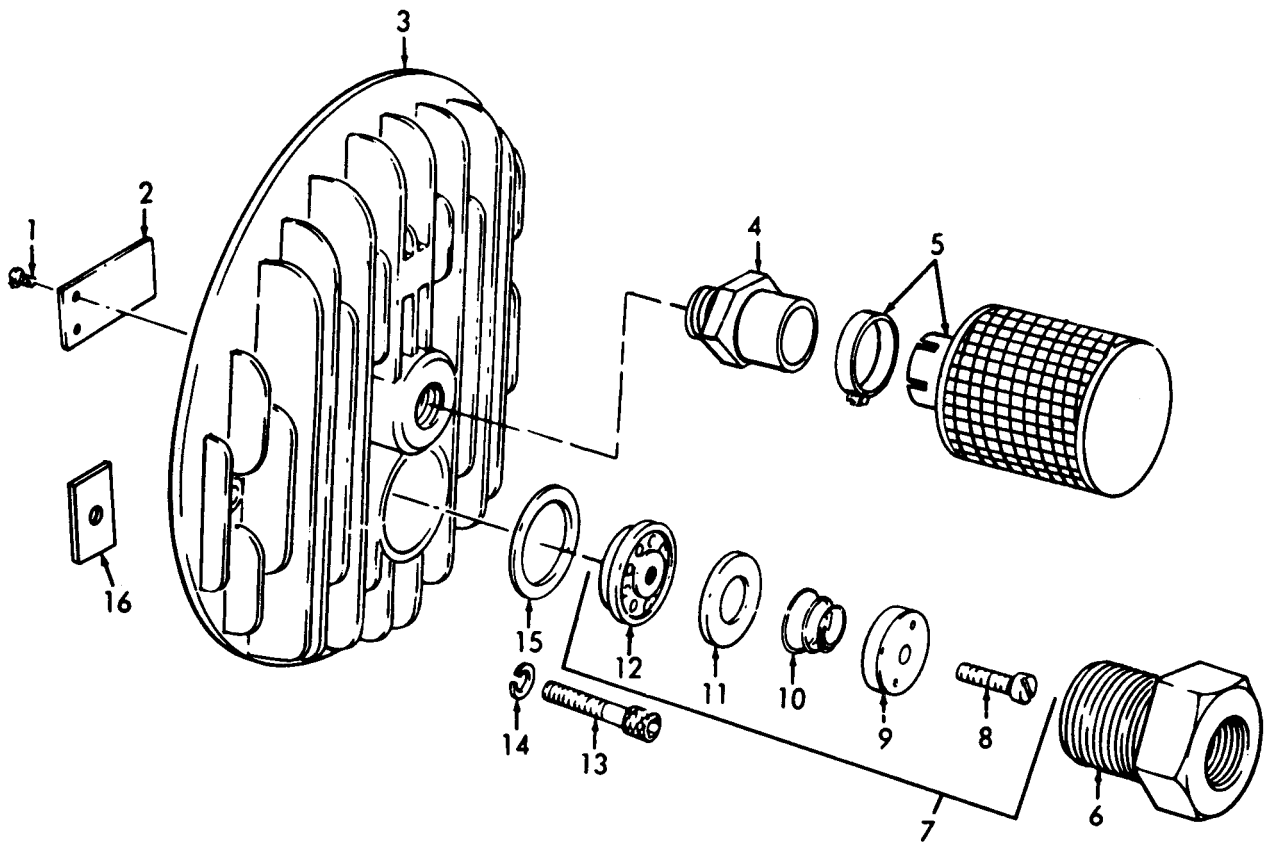
Figure 17.

System



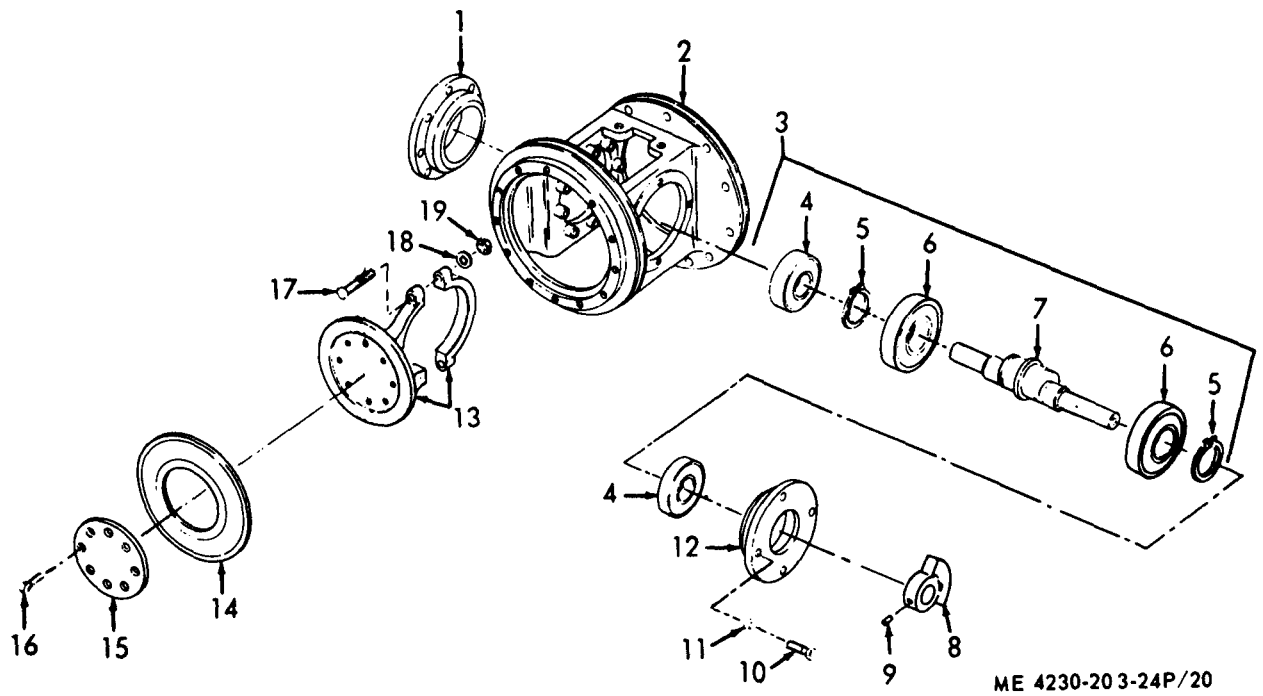
ME 4230-203-24P/18

Figure 18. Compressor Cooling



ME 4230-203-24P/19

Figure 19. Compressor Cylinder Head



ME 4230-203-24P/20

Figure 20. Compressor Housing, Piston and Shaft

**Section VII. INDEX – FEDERAL STOCK NUMBER AND REFERENCE NUMBER
CROSS – REFERENDE TO FIGURE AND ITEM NUMBER**

<u>Stock Number</u>	<u>Figure No.</u>	<u>Item No.</u>	<u>Stock Number</u>	<u>Figure No.</u>	<u>Item No.</u>
2290-972-7922	9	2	4730-457-6391	3	2
2805-021-2312	11	4	4730-489-8252	17	16
2805-023-5165	11	11	4730-511-1677	4	2
2805-023-5166	11	18	4730-718-2654	17	3
2805-078-3865	13	5	4730-724-5839	3	3
2805-078-7877	13	4	4730-724-6067	4	8
2805-123-2089	4	1		11	17
2805-123-2990	9	1	4730-881-3929	4	3
2805-123-2991	13	3	4820-125-6329	11	1
2805-269-4692	13	10	4820-127-0216	19	7
2805-428-3544	13	8	4720-410-1925	17	20
2805-481-3528	12	3	5305-023-0233	1	7
2805-507-1163	11	38	5305-012-0585	7	1
2805-507-1454	13	7	5305-015-4976	7	10
2805-507-2468	11	9	5305-0179795	11	13
2805-529-9905	12	1	5305-018-0016	11	34
2805-544-0717	13	9	5305-042-0685	8	2
2805-544-0724	11	5	5305-052-9051	10	1
2805-544-0740	11	22		10	29
2805-544-0741	11	16	5305-058-3715	19	13
2805-562-1133	12	2	5305-068-0502	18	6
2805-608-0089	13	1	5305-068-0124	16	11
2805-610-3002	12	5		20	9
2805-618-1486	13	2	5305-145-6814	17	13
2805-691-3025	12	6	5305-151-1571	7	3
2805-875-4300	11	15	5305-208-7182	19	8
2805-875-4301	11	7	5305-209-2152	14	5
2805-888-9239	10	8	5305-266-6263	9	7
2805-941-6761	14	11	5305-269-3808	19	9
2805-997-4465	15	2	5305-269-3219	16	10
2805-927-4027	9	1	5305-270-7526	5	1
2910-023-5182	6	6	5305-274-1128	7	7
2910-123-4697	5	9	5305-353-6938	10	19
2910-544-0531	6	1	5305-527-5726	10	6
2910-526-1149	8	12	5305-550-2618	5	4
2910-905-9792	6	1	5305-576-2514	19	1
2910-912-8309	8		5305-564-2508	10	16
2920-023-5167	10	25	5305-638-9837	4	4
2920-288-3126	10	13	5305-680-9197	8	1
2920-562-1224	10		5305-720-8154	17	5
2920-564-2508	10	16	5305-723-9387	3	7
2920-573-9992	10	21	5305-724-5903	18	7
2920-718-5873	10	17	5305-818-7709	11	3
2920-848-3207	10	23	5305-939-9189	20	16
2920-848-3232	10	24	5305-939-9621	11	31
2940-404-7296	7	11	5305-954-8974	14	3
2940-496-4174	19	5	5306-207-8373	16	5
2940-585-1494	7	6	5306-543-4405	20	10
2990-607-6533	14	14	5306-576-0529	16	6
2990-659-6444	14	12	5306-637-9674	17	12
2990-670-4590	14	8	5306-655-6170	16	8
2990-670-4592	14	7	5306-655-7649	12	7
2990-718-5943	11	24	5306-720-8258	18	2
3110-108-7936	14	13	5306-754-4285	18	15
3110-155-6200	11	8	5306-822-8199	20	17
3110-277-0322	20	6	5307-690-0170	11	30
3110-277-0426	20	4	5310-010-6496	7	4
3740-253-5715	3		5310-012-0385	7	8
3740-437-7142	3	1		14	6
4230-087-7771	3	14	5310-027-3969	9	11
4230-087-7780	3	29	5310-043-1702	10	10
4230-123-2993	3	9	5310-044-3533	5	5
4230-869-7831	3		5310-044-6207	14	10
4310-125-6330	16	1	5310-167-0721	16	4
4310-132-1540	19	3		16	9
4310-132-1541	16	7		20	11
4310-906-7915	20	14		20	18
4310-906-7916	19	2	5310-276-3451	11	40
4310-906-7918	20	13	5310-508-2673	4	5
4310-906-7919	20	7	5310-543-2705	7	2
4330-907-9650	11	41		11	21
4520-608-4653	14	2	5310-543-5933	10	2
4730-103-5390	3	6		10	15
4730-196-2059	11	27		10	28
4730-203-5364	6	4	5310-582-5965	5	2
4730-246-9219	11	26		18	5
4730-249-1476	17	9		9	5
4730-266-0531	3	18	5310-584-5005	11	20
4730-270-4607	11	19		14	16
4730-277-8261	6	5	5310-595-5574	14	15
4730-277-9174	17	17	5310-616-7998	1	4

**Section VII. INDEX – FEDERAL STOCK NUMBER AND REFERENCE NUMBER
CROSS – REFERENDE TO FIGURE AND ITEM NUMBER**

<u>Stock Number</u>	<u>Figure No.</u>	<u>Item No.</u>	<u>Stock Number</u>	<u>Figure No.</u>	<u>Item No.</u>
5310-616-7998	4	7			
5310-655-5789	9	12			
	17	11			
	18	3			
	19	14			
5310-655-6457	1	3			
	4	6			
5310-753-4153	20	19			
5310-778-0261	11	2			
5310-809-4061	11	32			
5310-812-3373	10	5			
	11	35			
5310-818-3041	11	12			
	17	14			
5315-011-4813	11	10			
5315-253-8727	11	39			
5315-362-0212	11	33			
	16	12			
5315-582-2466	3	5			
5315-594-9501	15	4			
5320-042-5284	2	10			
5320-050-1206	2	7			
5320-550-1207	2	2			
5330-248-3831		26			
5330-248-3837		25			
5330-248-3838	3	21			
5330-252-6048	3	28			
5330-436-7190	3	11			
5330-436-7220	19	15			
5330-559-6579	11	14			
5330-582-2655	11	23			
5330-641-4354	3	22			
5330-908-0443	3	15			
5340-012-0525	14	17			
5340-020-8588	1	5			
5340-544-0698	12	4			
5340-601-1327	11	28			
5340-680-1583	15	5			
5340-680-1584	15	1			
5910-509-9603	10	9			
5910-780-8781	10	27			
5930-013-0401	10	22			
5935-919-5930	10	11			
5975-050-3066	11	25			
6150-268-3659	1	6			
6680-875-9420	11	28			
6685-236-3976	17	6			
8115-134-3130	2	1			

**Section VII. INDEX – FEDERAL STOCK NUMBER AND REFERENCE NUMBER
CROSS – REFERENDE TO FIGURE AND IEM NUMBER**

REFERENCE No.	MFG CODE	FIG No.	ITEM No.	REFERENCE No.	MFG CODE	FIG No.	ITEM No.
AC1536	34199	11	25	CFR70016	82254	1	1
A220474	34199	10	16	DFR70075	82254	18	4
A230066	34199	11	38	CFR70076	82254	18	1
A230092	34199	11	28	CFR70082	82254	20	2
A230103	34199	23	2	CFR70144	82254	2	1
A230538	34199	7	11	CPR7002	82254	16	7
A230540	34199	14	14	C230437	34199	10	
A230852	34199	5	3	C3122-101	78553	3	31
A230774	34199	11	19	FG8	77060	1	6
A231219	34199	11		FIG48	34494	17	1
A231408	34199	10	11	F230500	34199	8	
A231413	34199	11	4	G102582	24617	18	7
A231420	34199	6	6	G104149	24617	2	2
A231632	34199	10	23	G104150	24617	2	10
A231982	34199	10	3	G118752	24617	17	15
A232776	34199	15	2		24617	17	19
A235157	34199	14	11	G118757	24617	17	7
B230039	34199	12	5	G119097	24617	17	9
CFA70007	82254	17	6	G120146	24617	4	3
CFA70030	82254	2	3	G120233	24617	1	7
CFA70034	82254	3	2	G120376	24617	20	19
CFA70038	82254	3	23	G120377	24617	1	3
CFA70057	82254	3	15		24617	4	6
CFA70058	82254	3	16	G120388	24617	4	5
CFA70059	82254	3	17		24617	11	32
CFA70064	82254	3	1	G121711	24617	3	18
CFA70088	82254	18	10	G121753	24617	17	4
CFA70091	82254	19	4		24617	18	5
CFA70095	82254	19	2	G121801	24617	18	12
CFA70098	82254	3	32	G121887	24617	18	6
	82254	16	12	G121966	24617	17	13
CFA70114	82254	11	33	G122017	24617	20	10
	82254	16	12	G122027	24617	17	12
CFA70117	82254	16	3	G122033	24617	16	6
CFA70118	82254	19	10	G122040	24617	16	8
CFA70120	82254	19	11	G122147	24617	17	5
CFA70124	82254	19	15	G122077	24617	20	17
CFA70137-1	82254	19	16	G122089	24617	18	2
CFA70137-2	82254	19	16	G122181	24617	4	4
CFA70137-3	82254	19	16	G122201	24617	16	10
CFA70158	82254	3	11	G122782	24617	3	7
CFA70165	82254	3	13	G138227	24617	18	15
CFB70003	82254	16	1	G138558	24617	16	4
CFB70014	82254	17	18		24617	16	9
CFB70037	82254	3	8		24617	17	11
CFB70039	82254	3	24		24617	18	3
CFB70042	82254	3	20		24617	18	14
CFB70090	82254	20	15		24617	19	14
CFB70096	82254	19	7		24617	20	11
CFB70097	82254	3	29	G138542	24617	20	18
CFB70103	82254	17	7	G142271	24617	1	4
CFB70107	82254	20	8	G153421	24617	16	5
CFB70122	82254	19	9	G154976	24617	19	8
CFB70138	82254	2	6	G155941	24617	19	1
CFB70160	82254	3	9	G191950	24617	20	16
CFB70168	82254	3	12		24617	16	11
CFB70172	82254	3	10	G443990	24617	20	9
CFC70004	82254	17	22	G444098	24617	17	3
CFC70041	82254	19	6	G444122	24617	4	2
CFC70046	82254	3	14	G9402099	24617	17	2
CFC700052	82254	3	19	G9415236	24617	2	7
CFC70083	82254	20	14	G9421707	24617	3	5
CFC70089	82254	18	11	J7153-1	76005	19	13
CFC70100	82254	19		K161P28975J	34199	1	5
CFC70101	82254	20	3	MS16535-156	96906	4	1
CFC70111	82254	20	12	MS29513-11	96906	2	5
CFC70112	82254	20	1	MS29513-110	96906	3	26
CFC70123	82254	19	13	MS29513-13	96906	3	25
CFC70132	82254	3	27	MS29513-4	96906	3	21
CFD70000	82254	1	2	MS29513-6	96906	3	22
CFD70033	82254	3		MS35785-7	96906	3	28
CFD70074	82254	19	3	MS35791-2	96906	17	20
CFD70077	82254	18	16	MS51086-1	96906	2	8
CFD70078	82254	20	13	MS51963-99	96906	6	1
CFD70079	82254	16	2	MS90726-65	96906	3	3
CFD70084	82254	20	7	OHJ	00736	18	9
CFD70129	82254	17	8	R700-225S	95933	19	5
	82254	17	10	X101-8	34199	18	8
CFD70150	82254	2	9	X131-1	34199	5	5
CFD70152	82254	17	21		34199	10	10
CFD70163	82254	3			34199	10	19

**Section VII. INDEX-FEDERAL STOCK NUMBER AND REFERENCE NUMBER
CROSS-REFERENCE TO FIGURE AND ITEM NUMBER**

<u>REFERENCE NO.</u>	<u>MFG CODE</u>	<u>FIG NO.</u>	<u>ITEM NO.</u>	<u>REFERENCE NO.</u>	<u>MFG CODE</u>	<u>FIG NO.</u>	<u>ITEM NO.</u>
X132-1	34199	9	7	230071	34199	11	14
X132-2	34199	5	1	230075	34199	10	8
X132-4	34199	10	6	230078	34199	14	2
X132-6	34199	11	34	230098	34199	9	8
X134-1	34199	7	7	230125S	34199	14	12
	34199	9	7	230148	34199	10	10
X140-1	34199	8	1	230149	34199	14	8
X154-3	34199	11	31	230150	34199	9	2
X18-2	34199	7	4	230151	34199	11	8
X20-1	34199	7	2	230160	34199	5	6
	34199	11	21	230164	34199	5	7
X217-5	34199	6	4	230168	34199	13	6
X218-24	34199	11	27	230-70S	34199	13	4
X22-11	34199	10	5	230175	34199	11	1
	34199	11	35	230625S	34199	13	5
X22-9	34199	10	2	230293	34199	15	1
	34199	10	18	230294	34199	15	5
	34199	10	28	230360	34199	10	7
X230-11	34199	11	29	230363	34199	9	9
X24-2	34199	9	12	230395	34199	11	9
X25-12	34199	11	40	230467	34199	12	1
X25-13	34199	14	10	230476	34199	14	7
X25-48	34199	14	4	230477	34199	14	9
X25-55	34199	11	12	230505	34199	11	24
X25-58	34199	14	15	230525	34199	12	6
X25-63	34199	7	8	230526	34199	12	7
X25-72	34199	14	6	230537	34199	7	6
X271-26	34199	11	7	230539	34199	7	9
X271-27	34199	11	15	230553	34199	7	5
X286-10	34199	11	10	230582	34199	13	2
X293-4	34199	14	13	230600	34199	11	26
X295-2	34199	5	8	230713	34199	9	1
X305-4	34199	4	8	230992	34199	11	3
	34199	11	17	231220	34199	11	6
X389-2	34199	10	17	231355	34199	11	39
X477-10	34199	6	5	231409	34199	11	11
X5-1	34199	7	1	231410	34199	10	13
X5-4	34199	5	4	231417	34199	11	18
X5-7	34199	14	5	231419	34199	11	41
X5-8	34199	11	13	231631	34199	10	24
X51-41	34199	7	3	231638	34199	9	1
X67-27	34199	7	10	231718	34199	10	25
X67-39	34199	10	1	231719	34199	10	27
	34199	10	29	231956	34199	12	3
X67-46	34199	14	3	231984	34199	11	11
X81-1	34199	11	20	232535	34199	10	20
	34199	14	16	232614	34199	14	1
X85-1	34199	9	11	232617	34199	14	17
2996606X1E	43334	20	4	232651	34199	9	10
299608X1E	79136	20	6	232770	34199	15	3
103	14127	3	6	232777	34199	13	10
163	14127	3	33	232834	34199	10	26
200372	34199	8	3	234413	34199	8	9
200375	34199	8	6	234427	34199	8	10
200376	34199	8	7	236655	34199	5	9
200408	34199	8	8	240013	34199	13	8
200418	34199	8	4	240281	34199	11	37
200420	34199	8	2	240282	34199	11	36
200439	34199	8	5	277180	34199	8	11
210101A	34199	6	1	3103	14127	17	16
2100223	34199	8	12	3603	14127	3	30
210293	34199	10	12	382	30399	2	4
220082	34199	10	9	5102-156ZF	79136	20	5
220174	34199	10	21				
220534	34199	11	2				
220879	34199	6	2				
220881	34199	6	3				
223072	34199	10	22				
230004	34199	12	4				
230075	34199	13	3				
230013	34199	13	9				
230020	34199	13	7				
230024	34199	11	5				
230027	34199	13	1				
230043	34199	11	30				
230046	34199	11	23				
230048	34199	11	22				
230049	34199	9	3				
230053	34199	15	4				
230054	34199	9	4				
230057	34199	11	16				

By Order the Secretary of the Army:

**W.C. WESTMORELAND,
General, United States Army,
Chief of Staff.**

Official:

**VERNE L. BOWERS,
Major General, United States Army,
The Adjutant General.**

Distribution:

To be distributed in accordance with DA Form 12-25A (qty rqr Block #514), Organizational maintenance requirements for Delousing.

TM 10-4230-203-24P DELOUSING OUTFIT: POWER DRIVEN—1970